

# TRANSPORTATION EQUITY

A Pedestrian & Bicycling Perspective

**MODAL, REGIONAL, POPULATION**

Steven E. Miller  
LivableStreets Alliance  
Harvard School of Public Health

# THE 5 E'S

## (League of American Bicyclists)

**Engineering:** Creating safe and convenient places to ride and park

**Education:** Giving people of all ages and abilities the skills and confidence to ride

**Encouragement/Incentive:** Creating a strong bike culture that welcomes and celebrates bicycling

**Enforcement:** Ensuring safe roads for all users

**Evaluation/Improvement:** Planning for occasional re-evaluation and upgrading of what you've done.

# TRANSPORTATION EQUITY

## **MODAL**

**How We Move**



# Driving Down the Numbers Toward Zero Deaths

Rhode Island's New Strategic Highway Safety Plan

 **Transportation.gov**  
U.S. Department of Transportation

[▼ About DOT](#)

[Transportation and Health Tool Home](#) [Home](#)

[Indicator Data](#)

[Indicator Profiles](#)

## Complete Streets

### Toward Zero Deaths

FHWA is committed to the vision of eliminating fatalities and serious injuries

 **State of Rhode Island  
Division of Planning**  
DEPARTMENT OF ADMINISTRATION

[Home](#) > [Statewide Planning](#) > [Transportation](#) >

[About Us](#)

[Safe Routes to School](#)

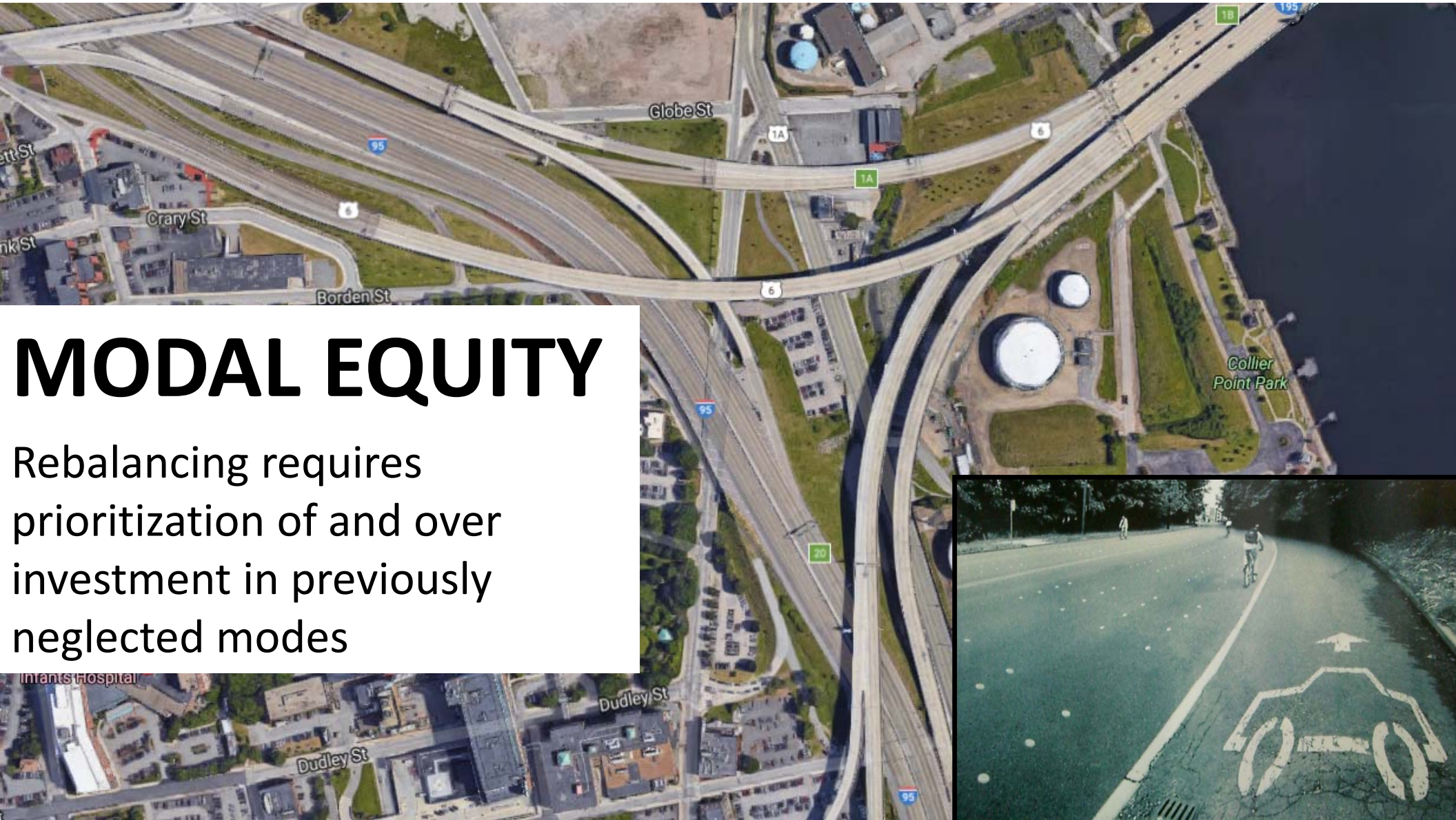
# MODAL EQUITY

POLICIES...DESIGN...CONSTRUCTION  
...OPERATION...MAINTENANCE



## Rhode Island's Complete Streets Action Plan





# MODAL EQUITY

Rebalancing requires prioritization of and over investment in previously neglected modes







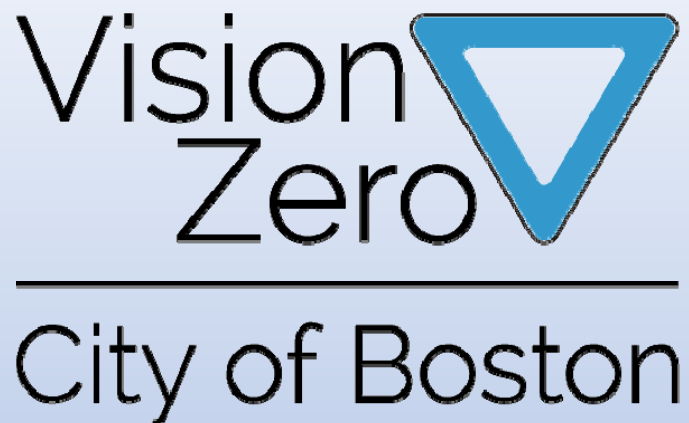
# MODAL EQUITY

Government & Consultant  
Technical Expertise May Be  
Lacking



# MODAL EQUITY

Politics Sets The Tone – from Top and Bottom!



## MASSACHUSETTS VISION ZERO COALITION

### **2016 PROGRESS REPORT**

*An Evaluation of the City of Boston's Action Plan for  
Preventing Traffic Fatalities & Injuries on Boston Streets*

#### 1. Rapid Response

- Immediate visit; 1 week visible action
- Include Advocates.
- Be Bold – its temporary!
- Include in longer-term to-do list.

#### 2. ProActive

- Seek out similar locations
- Crowd-source other danger areas
- Use quick-fixes; include in longer-term list

#### 3. Evaluate

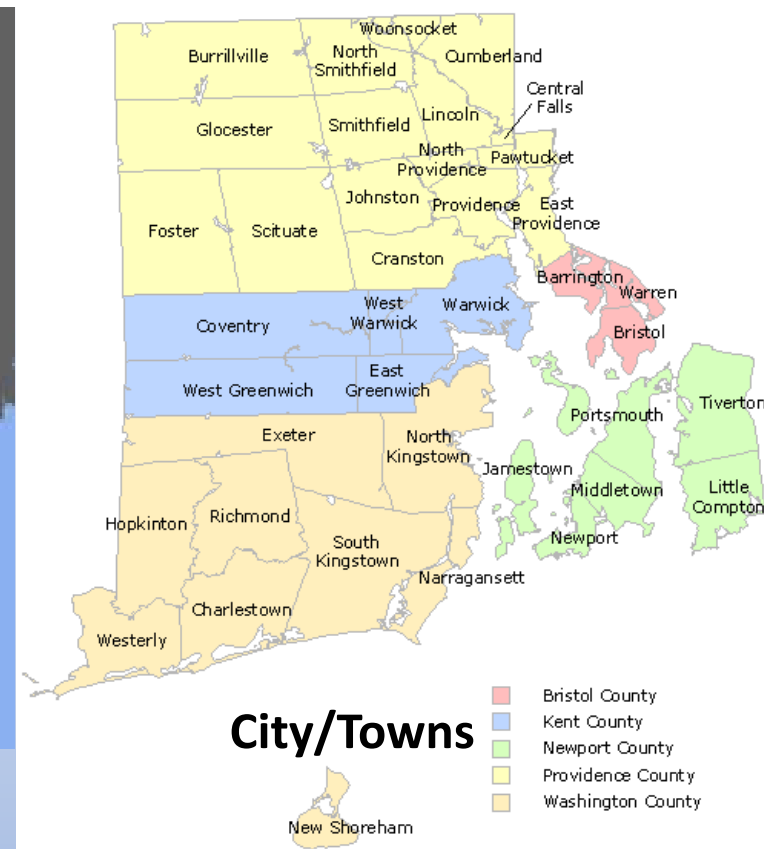
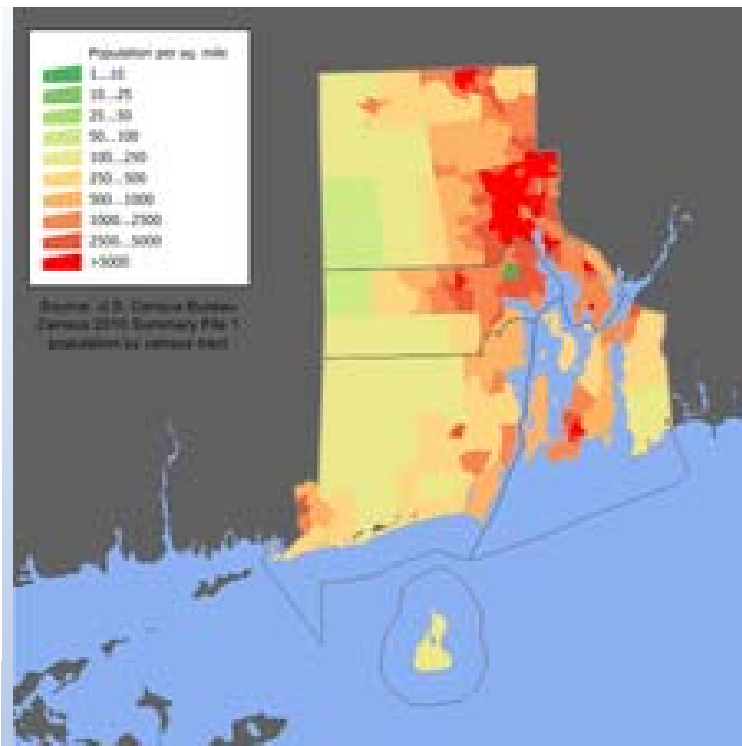
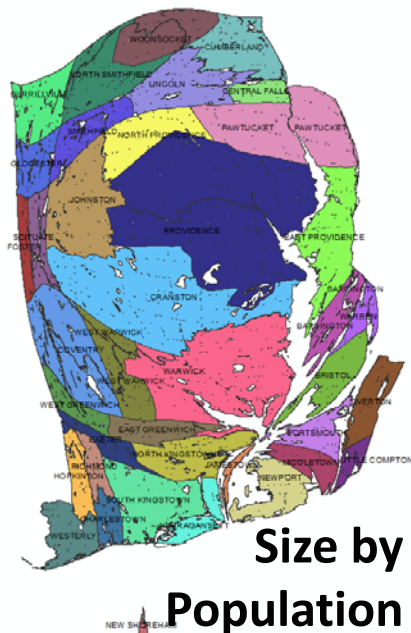
- Invite public input!



# TRANSPORTATION EQUITY

## **REGIONAL**

**Locational Differences**



# REGIONAL EQUITY

- > Urban, Town Centers, Residential & Rural
- > Internal Trips, Through-Routes  
(Major Roads, Greenways, Opportunities)

# REGIONAL EQUITY

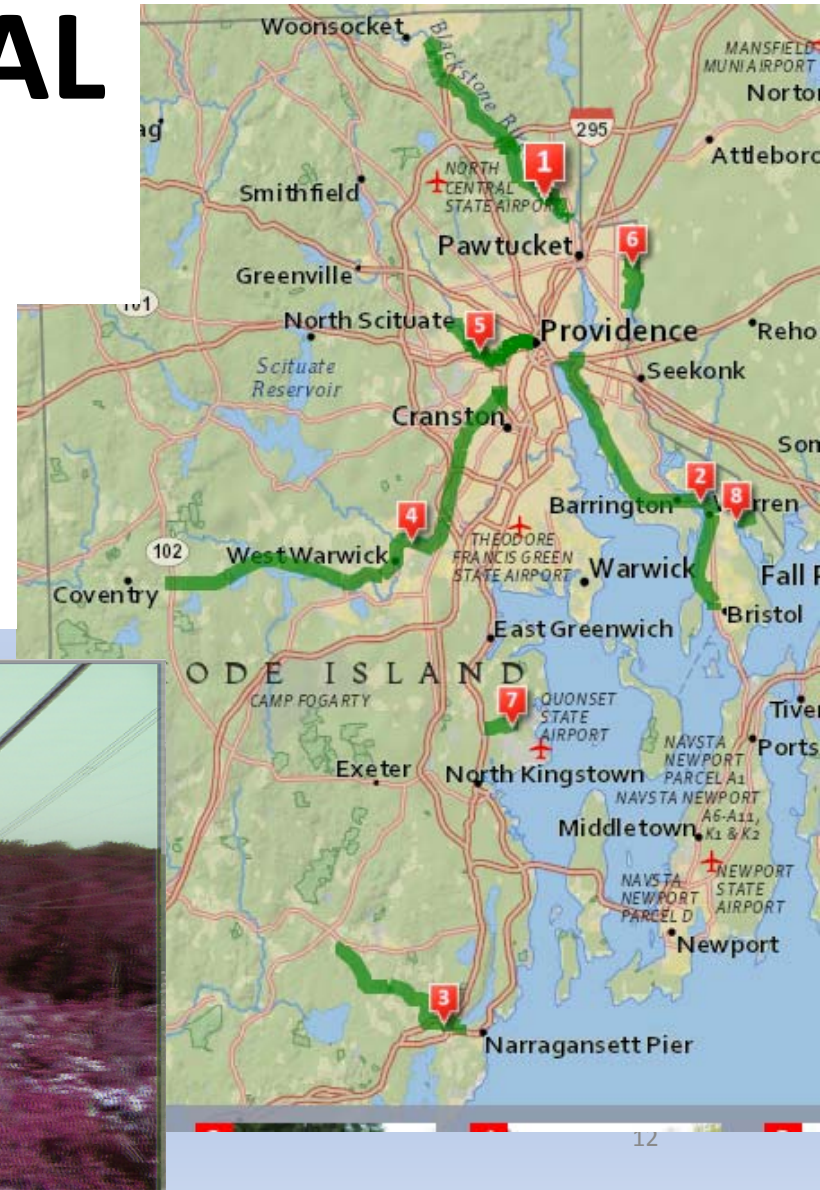
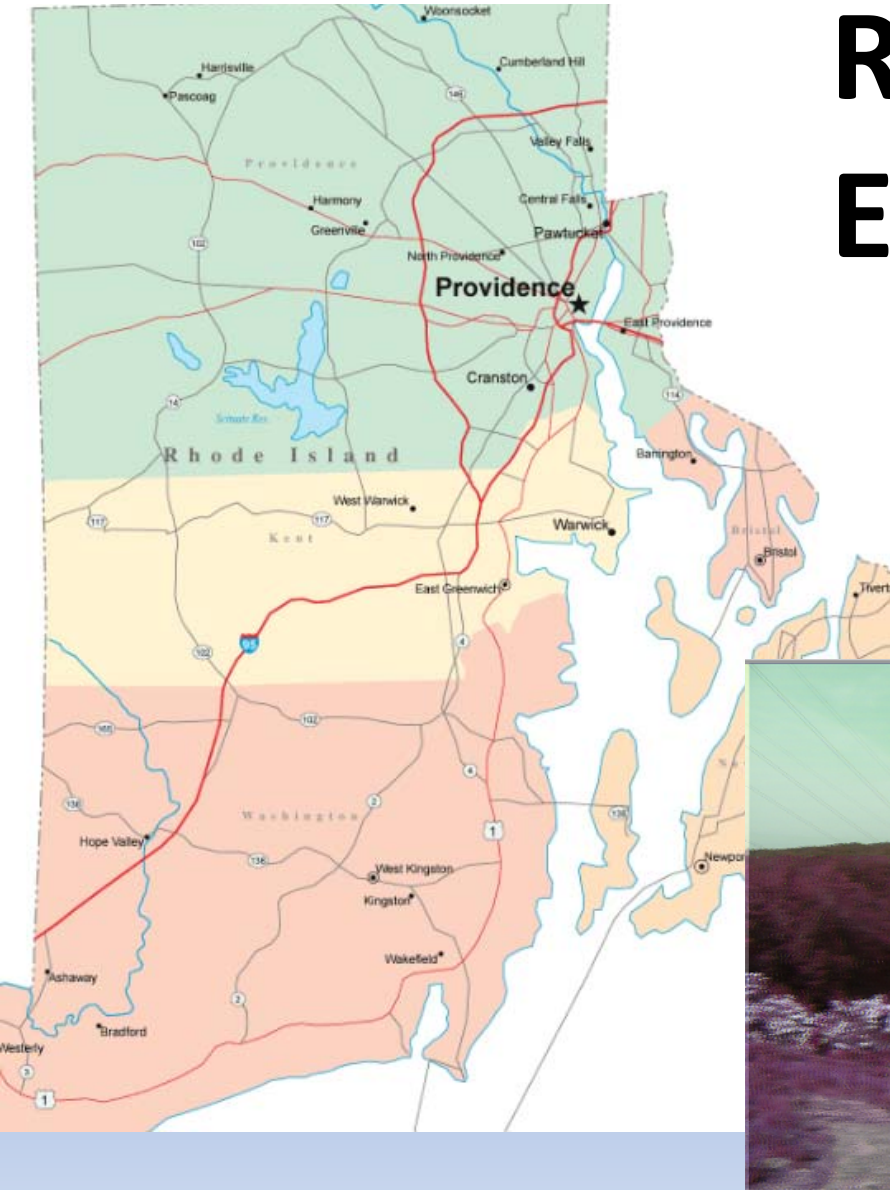
Internal Trips: Jobs, Shopping, Schools, Playgrounds  
Neighborways & Slow Zones





# REGIONAL EQUITY

Thru-Trips:  
←Major Roads,  
Greenways →  
Opportunities





# TRANSPORTATION EQUITY

## **POPULATION**

**Groups of People**

# POPULATION EQUITY:

## PEOPLE & ACCESS!

Culture, Infrastructure, Support\*, Context  
(\*skills, affordability, community)

### Social Determinants of Health



### Does Past Performance Have Anything To Do With Future Results?

JANUARY 10, 2015 BY [DAVID JOHN MAROTTA](#)



# POPULATION EQUITY:

Culture — start by listening!





# POPULATION EQUITY:

SUPPORT:

Skills – Affordability -- Community

Infrastructure:  
Community Leadership

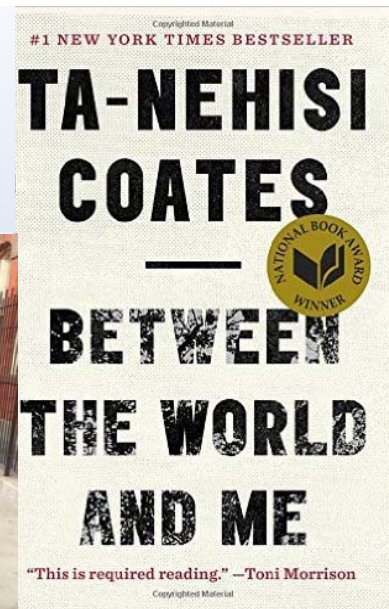
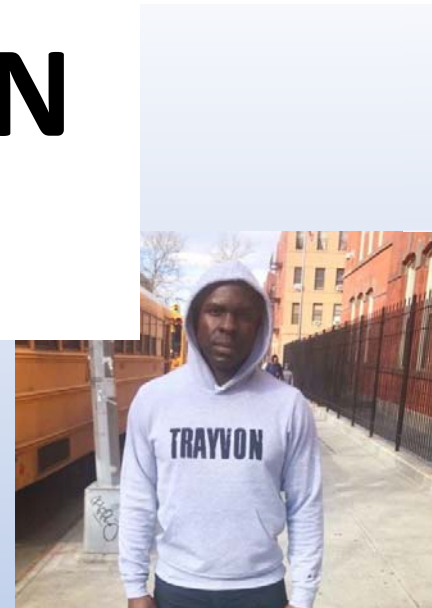




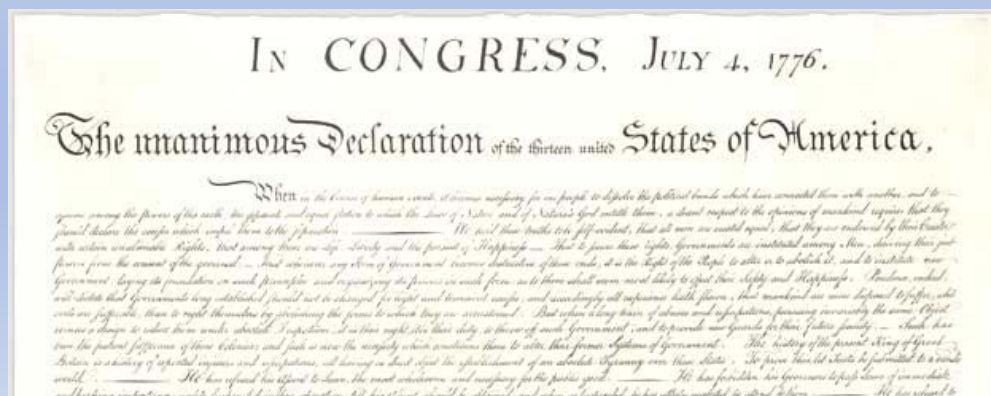


# POPULATION EQUITY: CONTEXT

<-By Fibonacci Blue from Minnesota, USA - Justice for Jamar Response Action, CC BY 2.0,  
<https://commons.wikimedia.org/w/index.php?curid=47961922>



# TRANSPORTATION EQUITY





# TRANSPORTATION EQUITY

A Pedestrian & Bicycling Perspective

**MODAL – Policies Are Not Enough**

**REGIONAL – Context Sensitive**

**POPULATION – Listen, Support, Context**