

Rhode Island Moving Forward Long-Range Transportation Plan 2040
Municipal Roundtable – Bristol County
www.PlanRI.com | PlanRI2040@gmail.com

Municipal Roundtable Meeting Summary

Date/time: Wednesday, September 20th, 2017 10:00 AM to 12:00 AM

Location: Bristol Library
525 Hope Street
Bristol, RI 02809

Invited Bristol County participants included representatives from Barrington, Warren, and Bristol. Project staff from RI Statewide Planning and VHB helped facilitate the discussions.

After an introduction to the Long-Range Transportation Plan purpose, the attendees were lead through an exercise to provide their input on:

1. Economic Development
2. Bicycle & Pedestrian Mobility
3. Public Transportation
4. Asset Management, Safety Resiliency

The purpose of this exercise was to identify the strengths, weaknesses, opportunities, and threats associated with each of the above sectors. Participants were encouraged to write down their ideas for improvement or concerns. Summary points from the exercise include:

Economic Development

- Route 136 backups impede economic growth- people will drive around to avoid traffic.
- Roundabouts may ease congestion.
- Historic character threatened by traffic diversion in Warren.

Bicycle & Pedestrian Mobility

- There is local support and buy-in for bicycle and pedestrian improvements
- Missing sidewalk linkages and non-ADA compliant sidewalks force people to walk in the street
- Coordination between State and local communities should be better.
- There is a need for better education on bike path rules, bike safety, and sharrows.
- Opportunity to revitalize Safe Routes to School.
- State should financially support local efforts to improve sidewalks on State roads.
- Sign fatigue.

Public Transportation

- Improve connections between rail and the roads used to transport the freight.
- Not a lot of ridership for widespread public transportation
- Loss of port connections in East Providence

Asset Management, Safety, & Resiliency

- When the State doesn't maintain their infrastructure, it affects the local communities.
- Mains Street/114 and Route 136 in Warren have backups
- Bridges in Bristol being re-built without consideration to sea level rise.
- Create a statewide vulnerability ACTION plan and do pilot projects in the most vulnerable communities.
- Local State DOT liaison for each community (similar to what National Grid does)
- Include community priorities in overall State vision/TIP list

Attendees were encouraged to visit the project website www.PlanRI.com or to contact the project lead if they have any questions or additional comments.



Rhode Island Moving Forward Long-Range Transportation Plan 2040
Municipal Roundtable – Bristol County
www.PlanRI.com | PlanRI2040@gmail.com

Agenda & Comment Form

Date/time: Wednesday, September 20th, 2017 10:00 AM to 2:00 PM

Location: Bristol Library
525 Hope Street
Bristol, RI 02809

Agenda:

Sign-in Table – County feedback map

10:00 AM – Long-Range Transportation Plan Overview – presentation

10:30 AM - Break-out Sessions: SWOT Analysis

1. Economic Development/Freight/Tourism
2. Bicycle & Pedestrian Mobility
3. Public Transportation
4. Asset Management, Safety, & Resiliency

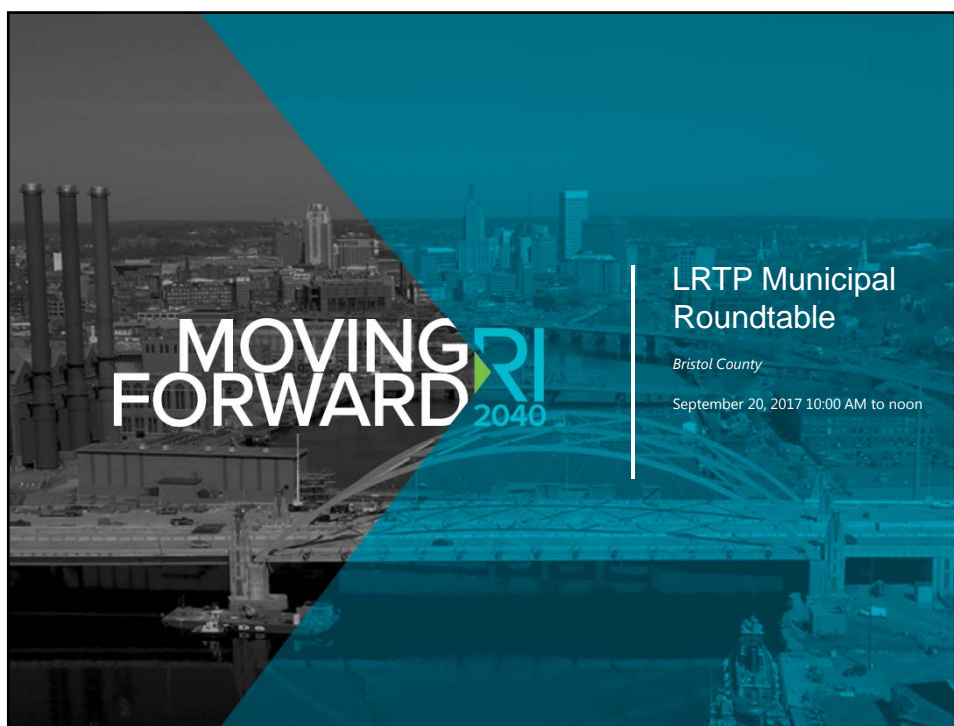
11:15 PM - Break-out Session Summary & Discussion

11:45 PM – Closing Remarks

Comments:

Please leave comments at the sign-in desk, email, or mail them to:

Rhode Island Division of Planning
One Capitol Hill, 3rd Floor
Providence, RI 02903
Attn: Long-Range Transportation Plan
Email: PlanRI2040@gmail.com



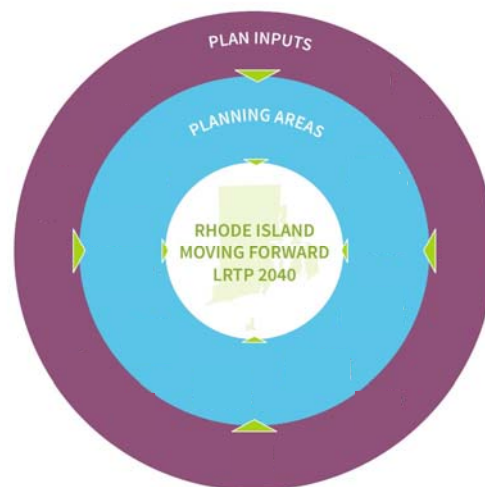
Agenda

1. Welcome & Introductions
2. Project Overview
3. Breakout Stations
 - Economic Development
 - Bicycle and Pedestrian
 - Public Transportation
 - Safety, Resiliency, Asset Management
4. Recap from Breakout Stations
5. Next Steps / Q&A



What is an LRTP?

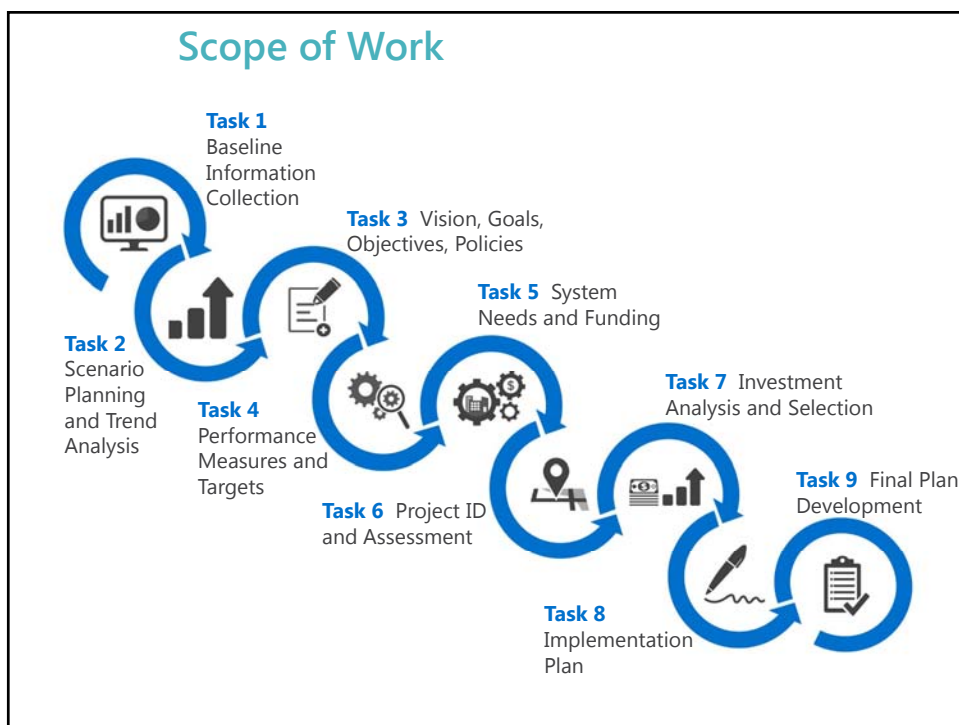
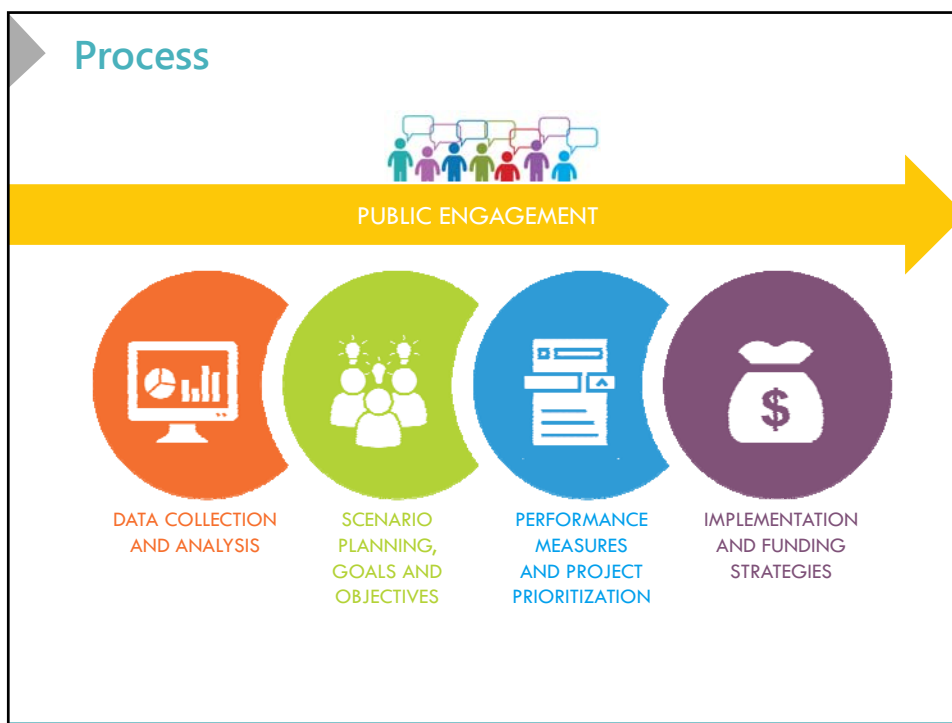
- Transportation vision plan
- Aligned with other long-range planning efforts
- Inputs
 - Policy
 - Data
 - Funding
 - Public Outreach



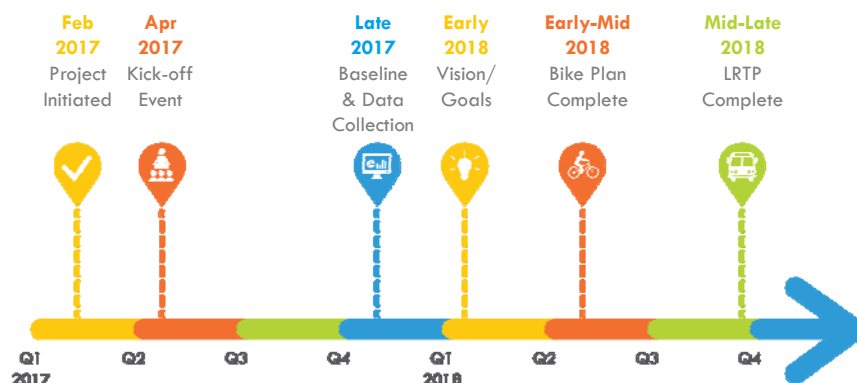
Purpose of an LRTP

sets the direction for major *transportation* investments for the next 20 years





Schedule

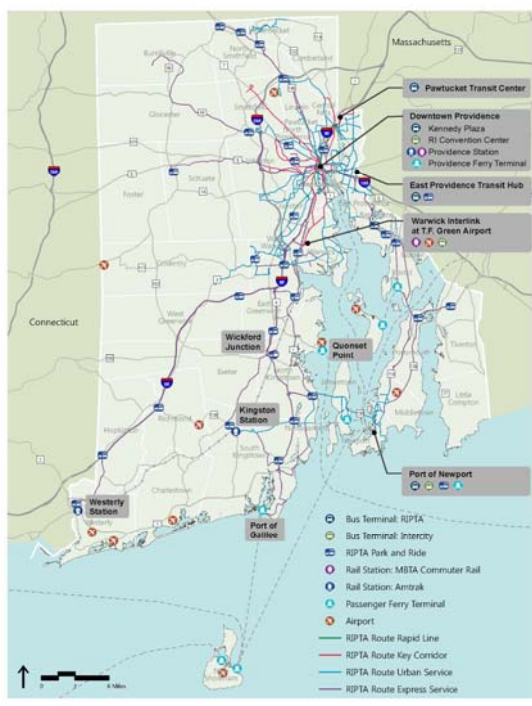


Data Collection



Transit

- Bus Terminals and Routes
- Train Service
- Ferry Terminals
- Airports



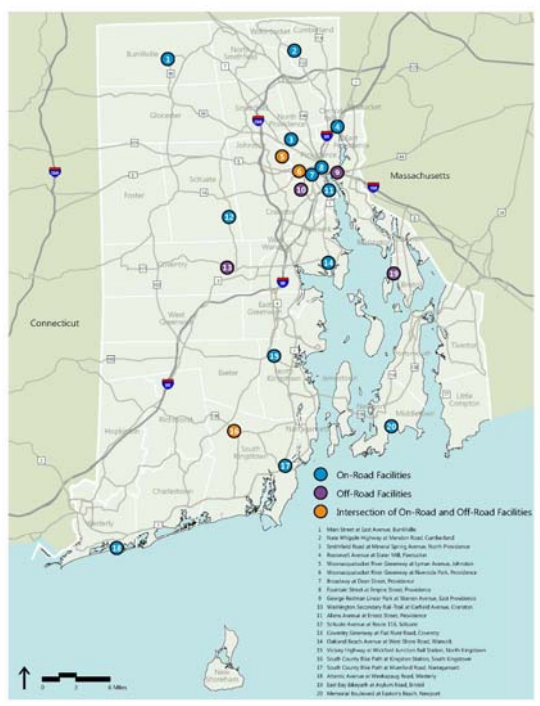
Bicycle & Pedestrian Network

- RIGIS Bicycle Network
- Model Inventory of Roadway Elements (MIRE) Data



Bicycle & Pedestrian Network

- Count Locations



Freight

- RI State Rail Plan 2014
- RI Freight and Goods Movement Plan

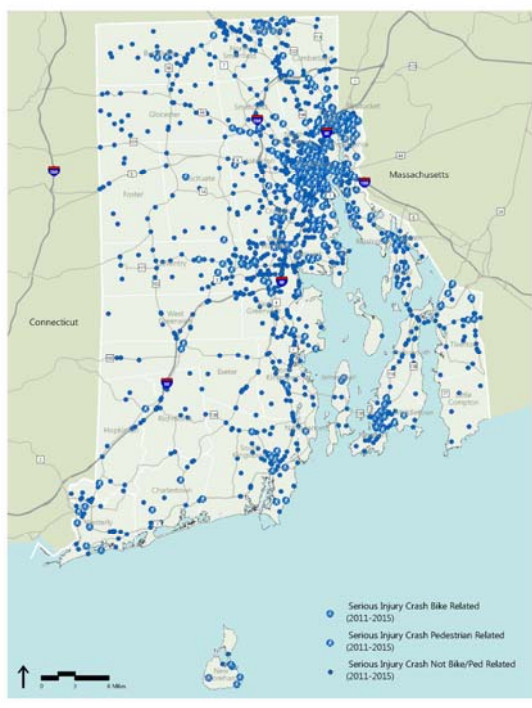


Congested Corridors



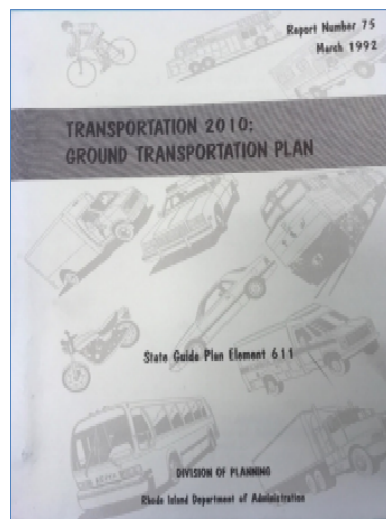
Safety

- Fatal crash locations (FARS)
- Serious Injury crash locations (RIDOT-OHS)
- 2011-2015 data



L RTP 2010 Vision...

- Provide a **balanced** system
- Improve **existing** facilities
- Develop **innovative** solutions
- Support **efficient** movement of goods
- Develop **programs** that contribute to environmental and economic policies
- Provide services for **elderly and handicapped**
- **Coordinate** with other states, local officials, interest groups and the public



Visioning – Needs, Concerns, Opportunities



State of Good Repair



Economic Development



GHG Reductions & Climate Change



Integrated Systems & Future Technology

What are the strengths and weaknesses of our transportation network?

What impact can transportation have on other sectors?

What does multimodal transportation look like in 20 years?

What are your goals for transportation in Rhode Island?

What role does technology play in transportation?

Public and Stakeholder Engagement

- We want to hear from you!
 - Public Workshops
 - **Municipal Roundtables**
 - Stakeholder Topic Groups
 - Advisory Committees
- Tools and Resources
 - Website
 - Social Media
 - Interactive Bicycle Map
 - Survey



Ongoing Public Outreach



Home About Project News Meetings & Events Documents Get Involved

Rhode Island Moving Forward TRANSPORTATION FOR THE NEXT 20 YEARS



Welcome to the home of the Rhode Island Long-Range Transportation Plan (LRTP) and Bicycle Mobility Plan (BMP). The Project Team will be using this website, and other tools, to engage and communicate with the public. We look forward to providing updates on project happenings and progress. If you have any comments or questions, please share them with us. We will compile your comments and review them with the Project Team.

THE PLANS

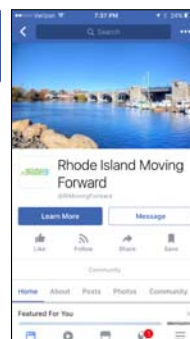
<http://www.planri.com/>

PlanRI2040@gmail.com

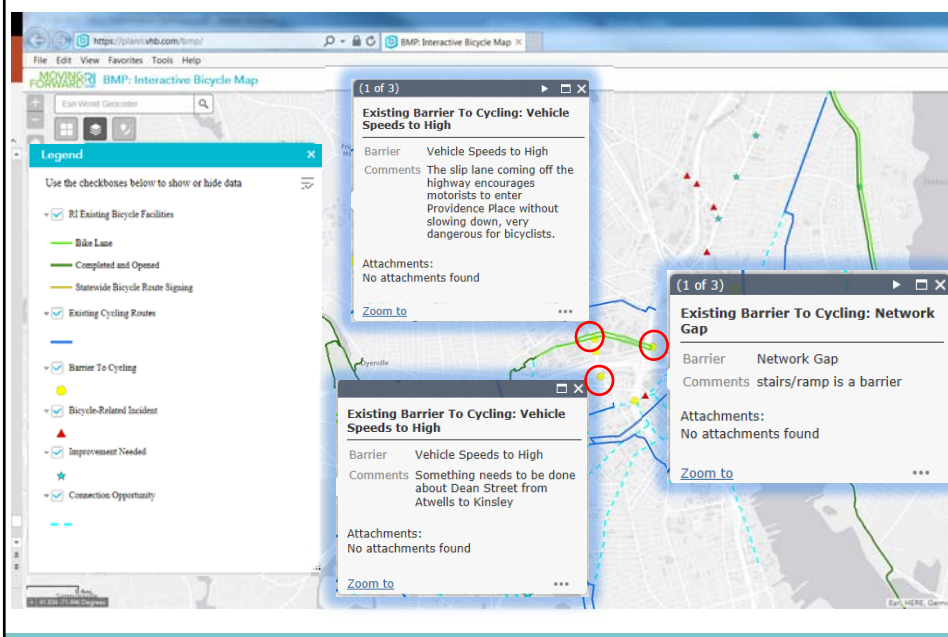
We want your ideas!

We want your input to learn what transportation challenges need to be addressed statewide. Share your observations here!

Send us your comments »
Take our transportation survey »
Contribute to our bicycle map »



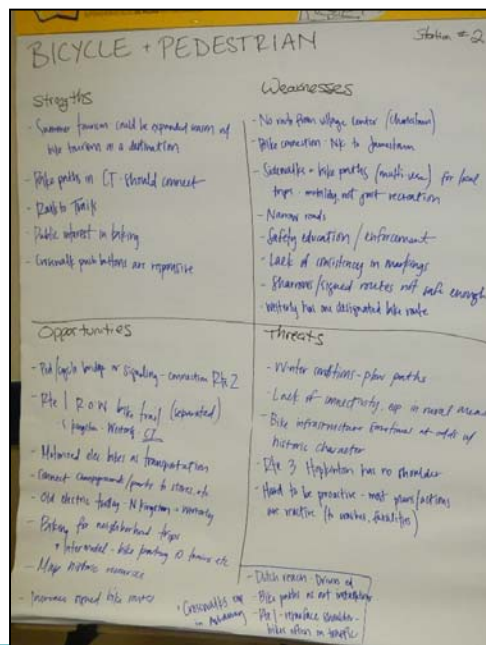
We Are Listening....



We Are Listening....Municipal Roundtable Feedback

Washington County

- Summer tourism could be expanded by taking advantage of bike tourism
- There is a public interest in more bike connectivity and enhancing cyclist safety
- Some roads are too narrow to safely allow bikes
- Lack of consistency in lane markings
- Consider bikes as a mode of transportation, not just recreation
- Winter plowing efforts don't always allow for safe bike travel
- Connect bike paths to more destinations like shops, train stations, beaches, and campgrounds



We Are Listening....Municipal Roundtable Feedback

Providence County

- Great existing off-road paths and facilities
- Notable gaps in northern Rhode Island
- Discontinuity at junctions where paths terminate can be a danger
- Great momentum behind cycling (as a movement)



Next Steps

Data Collection

Public and Stakeholder Engagement

- September: Municipal Roundtable discussions (by county)
- Public Workshop #1: Discovery
 - **9/21 – Pawtucket**
 - **9/25 – Narragansett**
 - **9/28 – Bristol**
- Stakeholder Topic Groups Meetings

Scenario Development

