

Rhode Island Moving Forward Long-Range Transportation Plan 2040
Municipal Roundtable – Kent County
www.PlanRI.com | PlanRI2040@gmail.com

Municipal Roundtable Meeting Summary

Date/time: Tuesday, September 19th, 2017 3:00 PM to 5:00 PM

Location: East Greenwich Library
82 Peirce Street
East Greenwich, RI 02818

After an introduction to the Long-Range Transportation Plan purpose, VHB and SPP lead an exercise to provide their input on:

1. Economic Development
2. Bicycle & Pedestrian Mobility
3. Public Transportation
4. Asset Management, Safety Resiliency

The purpose of this exercise was to identify the strengths, weaknesses, opportunities, and threats associated with each of the above sectors. Participants were encouraged to mark-up maps and write down their ideas for improvement or concerns. Summary points from the exercise include:

Economic Development

- Coventry is currently investing in a pavement management system.
- Congestion on Sandy Bottom Road and Route 3 during evening commute
- Leverage the river as a tourism opportunity for water and bicycle recreation and transportation.
- Limited funding is a threat to the whole area.
- Many roads have limited right of way which limits improvement options.

Bicycle & Pedestrian Mobility

- Coventry is in the process of connected the Center of New England to the Connecticut boarder with multimodal facilities and green spaces.
- Washington Secondary is a strength, provides a connection to Providence.
- Pavement markings are needed to supplement signage.
- More visible bicycle treatments are needed to overcome visual pollution
- Build bicycle connections to Connecticut

Public Transportation

- Coventry has significant Human Services needs (identified by RIPTA). Likely due to lack of transit services and an aging population.
- Coventry Town Hall, library, and trail head (soon police station coming here too) are all located together in the downtown, however, there is no public transportation access to this.
- Opportunity to use rideshare to close the first mile/last mile gap.
- Consider land use changes to support walking.

Asset Management, Safety, & Resiliency

- Roadway Safety Assessment on Arnold Road helped identify safety improvements and opened up funding opportunities.
- Rivers and waterways in the vicinity of Sandy Bottom Road and Route 3 can flood after major rain events.
- Many roads in Coventry are wide and invite faster speeds which hurts safety.
- Congestion on Route 33/Sandy Bottom Road could benefit from a road diet- reducing lanes.

Rhode Island Moving Forward Long-Range Transportation Plan 2040
Municipal Roundtable – Kent County
www.PlanRI.com | PlanRI2040@gmail.com

Agenda & Comment Form

Date/time: Tuesday, September 19th, 2017 3:00 PM to 5:00 PM

Location: East Greenwich Library
82 Peirce Street
East Greenwich, RI 02818

Agenda:

Sign-in Table – County feedback map

3:00 PM – Long-Range Transportation Plan Overview – presentation

3:30 PM - Break-out Sessions: SWOT Analysis

1. Economic Development/Freight/Tourism
2. Bicycle & Pedestrian Mobility
3. Public Transportation
4. Asset Management, Safety, & Resiliency

4:15 PM - Break-out Station Summary & Discussion

4:45 PM – Closing Remarks

Comments:

Please leave comments at the sign-in desk, email, or mail them to:

Rhode Island Division of Planning
One Capitol Hill, 3rd Floor
Providence, RI 02903
Attn: Long-Range Transportation Plan
Email: PlanRI2040@gmail.com



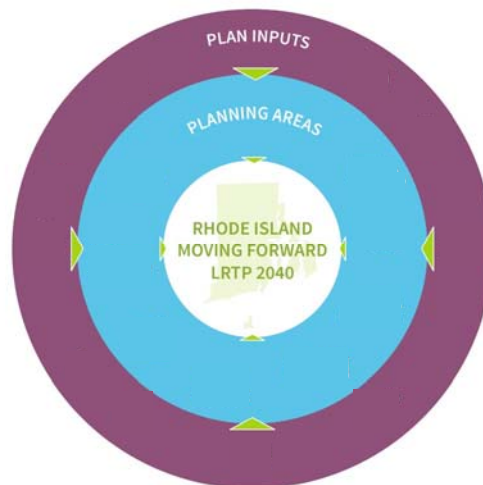
Agenda

1. Welcome & Introductions
2. Project Overview
3. Breakout Stations
 - Economic Development
 - Bicycle and Pedestrian
 - Public Transportation
 - Safety, Resiliency, Asset Management
4. Recap from Breakout Stations
5. Next Steps / Q&A



What is an LRTP?

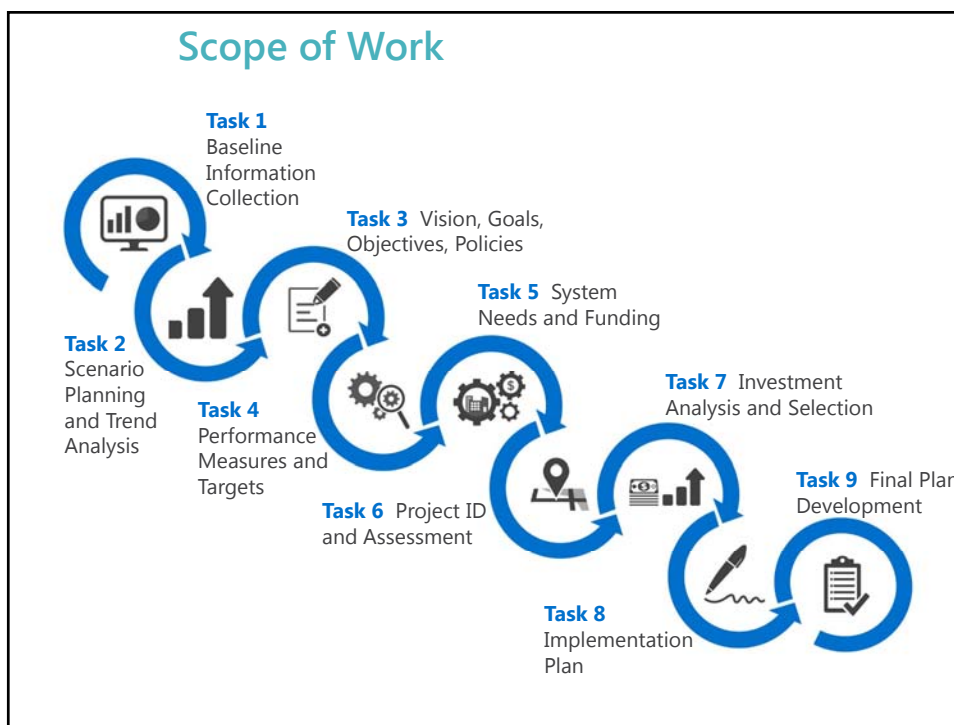
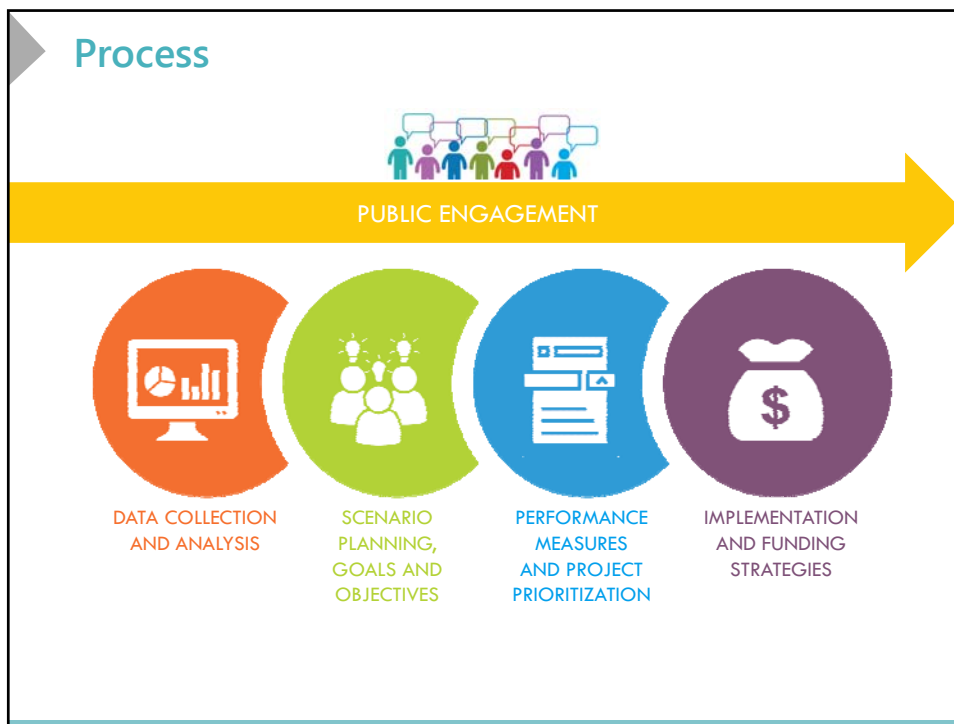
- Transportation vision plan
- Aligned with other long-range planning efforts
- Inputs
 - Policy
 - Data
 - Funding
 - Public Outreach



Purpose of an LRTP

sets the direction for major *transportation* investments for the next 20 years

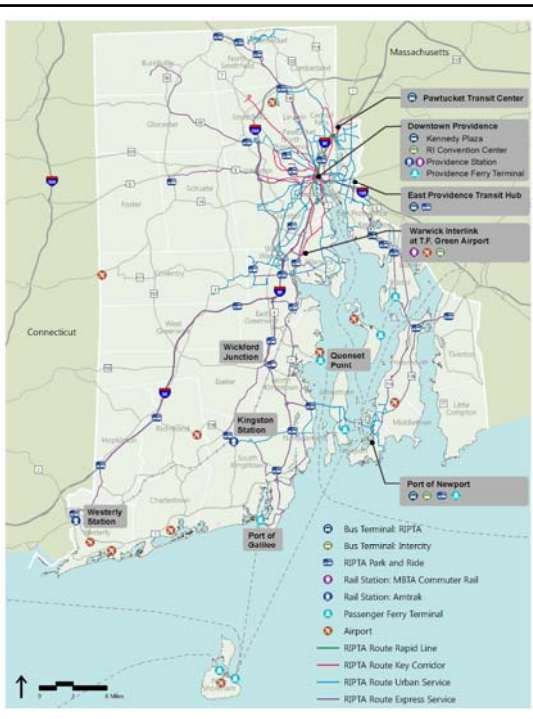






Transit

- Bus Terminals and Routes
- Train Service
- Ferry Terminals
- Airports



Bicycle & Pedestrian Network

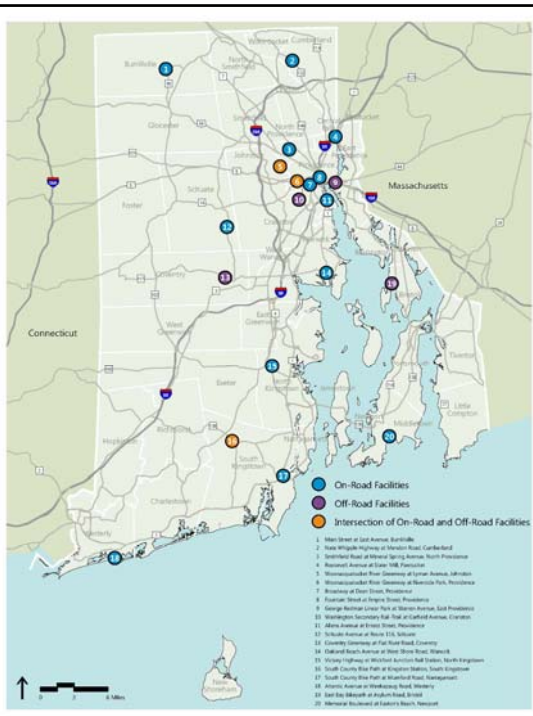
- RIGIS Bicycle Network
- Model Inventory of Roadway Elements (MIRE) Data

- Bike Path (RIDOT)
- Bike Lane (RIDOT)
- Sharrows (MIRE)
- Signed/Local Bike Route (RIDOT)
- Continuous Sidewalk (MIRE)
- Discontinuous Sidewalk (MIRE)



Bicycle & Pedestrian Network

- Count Locations



Freight

- RI State Rail Plan 2014
- RI Freight and Goods Movement Plan

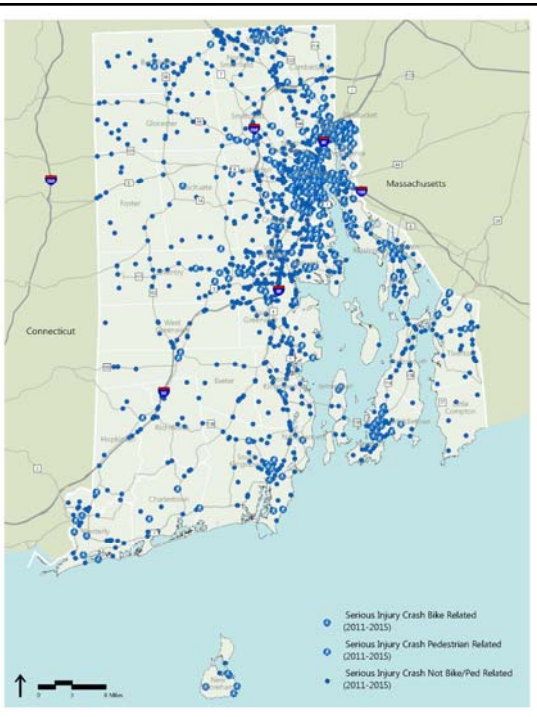


Congested Corridors



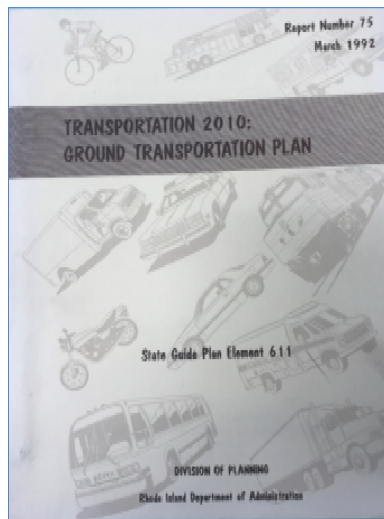
Safety

- Fatal crash locations (FARS)
- Serious Injury crash locations (RIDOT-OHS)
- 2011-2015 data



L RTP 2010 Vision...

- Provide a **balanced** system
- Improve **existing** facilities
- Develop **innovative** solutions
- Support **efficient** movement of goods
- Develop **programs** that contribute to environmental and economic policies
- Provide services for **elderly and handicapped**
- **Coordinate** with other states, local officials, interest groups and the public



Visioning – Needs, Concerns, Opportunities



State of Good Repair



Economic Development



GHG Reductions & Climate Change



Integrated Systems & Future Technology

What are the strengths and weaknesses of our transportation network?

What impact can transportation have on other sectors?

What does multimodal transportation look like in 20 years?

What are your goals for transportation in Rhode Island?

What role does technology play in transportation?

Public and Stakeholder Engagement

- We want to hear from you!
 - Public Workshops
 - **Municipal Roundtables**
 - Stakeholder Topic Groups
 - Advisory Committees

- Tools and Resources
 - Website
 - Social Media
 - Interactive Bicycle Map
 - Survey



Ongoing Public Outreach



Home About Project News Meetings & Events Documents Get Involved

Rhode Island Moving Forward

TRANSPORTATION FOR THE NEXT 20 YEARS



Welcome to the home of the Rhode Island Long-Range Transportation Plan (LRTP) and Bicycle Mobility Plan (BMP). The Project Team will be using this website, and other tools, to engage and communicate with the public. We look forward to providing updates on project happenings and progress. If you have any comments or questions, please share them with us. We will compile your comments and review them with the Project Team.

THE PLANS

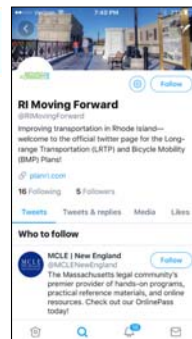
<http://www.planri.com/>

PlanRI2040@gmail.com

We want your ideas!

We want your input to learn what transportation challenges need to be addressed statewide. Share your observations here!

Send us your comments •
Take our transportation survey •
Contribute to our bicycle map •



We Are Listening....

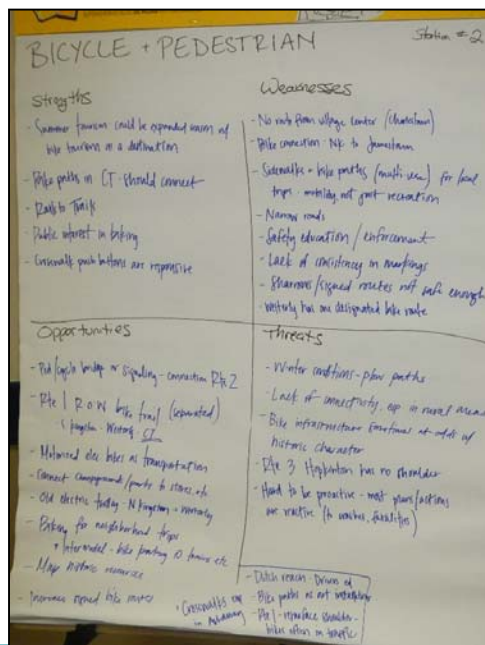
The screenshot shows the 'BMP: Interactive Bicycle Map' web application. On the left is a legend with checkboxes for 'RI Existing Bicycle Facilities', 'Existing Cycling Routes', 'Barrier To Cycling', 'Bicycle-Related Incident', 'Improvement Needed', and 'Connection Opportunity'. The map displays several markers, with three callout boxes providing details for specific barriers:

- Existing Barrier To Cycling: Vehicle Speeds to High**
 - Barrier: Vehicle Speeds to High
 - Comments: The slip lane coming off the highway encourages motorists to enter Providence Place without slowing down, very dangerous for bicyclists.
 - Attachments: No attachments found
- Existing Barrier To Cycling: Vehicle Speeds to High**
 - Barrier: Vehicle Speeds to High
 - Comments: Something needs to be done about Dean Street from Atwells to Kinsley
 - Attachments: No attachments found
- Existing Barrier To Cycling: Network Gap**
 - Barrier: Network Gap
 - Comments: stairs/ramp is a barrier
 - Attachments: No attachments found

We Are Listening....Municipal Roundtable Feedback

Washington County

- Summer tourism could be expanded by taking advantage of bike tourism
- There is a public interest in more bike connectivity and enhancing cyclist safety
- Some roads are too narrow to safely allow bikes
- Lack of consistency in lane markings
- Consider bikes as a mode of transportation, not just recreation
- Winter plowing efforts don't always allow for safe bike travel
- Connect bike paths to more destinations like shops, train stations, beaches, and campgrounds



We Are Listening....Municipal Roundtable Feedback

Providence County

- Great existing off-road paths and facilities
- Notable gaps in northern Rhode Island
- Discontinuity at junctions where paths terminate can be a danger
- Great momentum behind cycling (as a movement)



Next Steps

Data Collection

Public and Stakeholder Engagement

- September: Municipal Roundtable discussions (by county)
- Public Workshop #1: Discovery
 - 9/21 – Pawtucket
 - 9/25 – Narragansett
 - 9/28 – Bristol
- Stakeholder Topic Groups Meetings

Scenario Development



MOVING FORWARD RI 2040

L RTP Municipal Roundtable
Kent County
September 19, 2017 3:00 PM to 5:00 PM