

Rhode Island Moving Forward Long-Range Transportation Plan 2040
Municipal Roundtable – Newport County
www.PlanRI.com | PlanRI2040@gmail.com

Municipal Roundtable Meeting Summary

Date/time: Wednesday, September 13th, 2017 9:00 AM to 11:00 AM

Location: Portsmouth Library
2658 East Main Road
Portsmouth, RI 02871

Invited Newport County participants included representatives from RIDOT, Portsmouth, Newport, Middletown, and Jamestown. Project staff from RI Statewide Planning and VHB helped facilitate the discussions.

After an introduction to the Long-Range Transportation Plan purpose, attendees were lead through an exercise to provide their input on:

1. Economic Development
2. Bicycle & Pedestrian Mobility
3. Public Transportation
4. Asset Management, Safety Resiliency

The purpose of this exercise was to identify the strengths, weaknesses, opportunities, and threats associated with each of the above sectors. Participants were encouraged to mark-up maps and write down their ideas for improvement or concerns. Summary points from the exercise include:

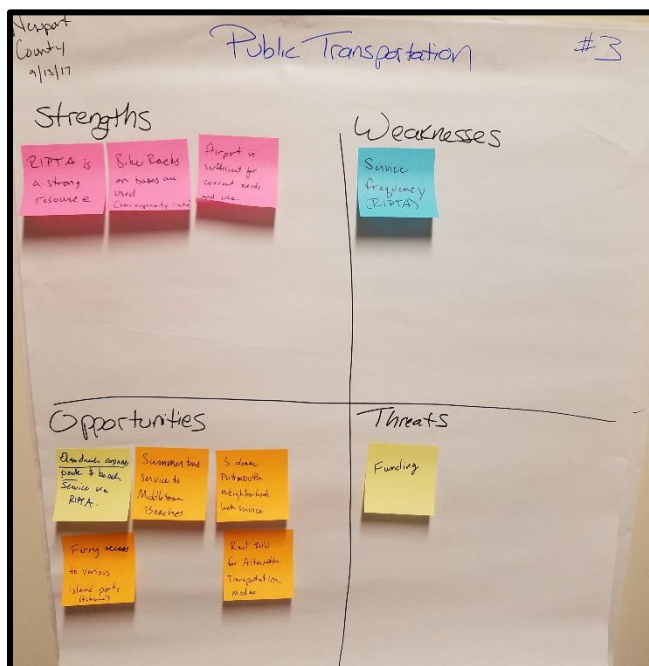
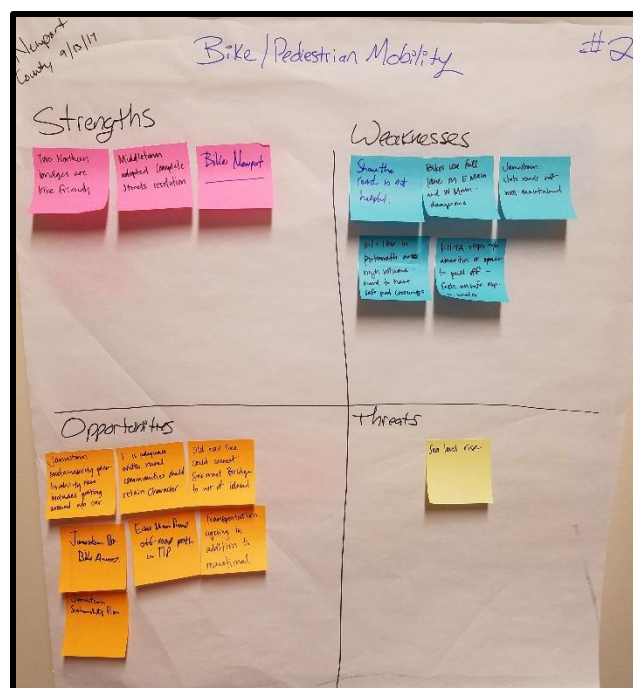
Economic Development

- Road beautification on Broadway (Newport) has been welcomed.
- Tourism brings opportunities for buses, cruise ships, vehicles, and pedicabs. It may also put a strain on all transportation systems.
- Newport's innovation center has promise to create jobs and support economic development.
- Roads are too narrow
- Reconnect rail to mainland via Fall River when the MBTA line is extended.
- There needs to be better communication and coordination between the State and the Navy base.



Bicycle & Pedestrian Mobility

- The two northern bridges are bike friendly.
- "Share the Road" is not helpful. Bikes use full lane on East Main Road and West Main Road (Newport) which is viewed as dangerous.
- Would like bike access across the Jamestown Bridge.
- Routes 114 and 136 in Portsmouth are high volume, four-lane roads, making it difficult to locate safe pedestrian crossings.
- Think of cycling as transportation, not just recreation.

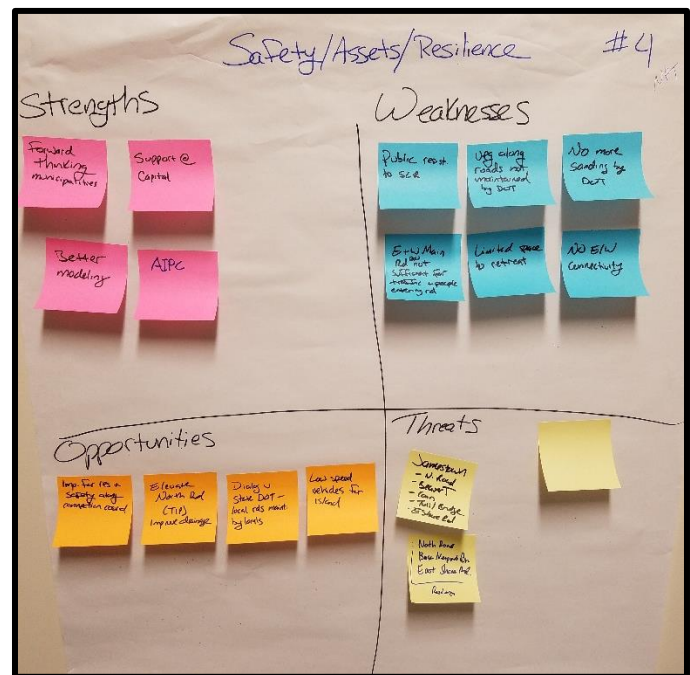


Public Transportation

- RIPTA is a strong resource but could improve frequency to the County.
- Bike racks on busses are used but may benefit from more capacity.
- Consider the rail right-of-way for alternative transportation modes.
- Add/Enhance summer bus service to Middletown beaches.
- Improve bus service to dense neighborhoods in Portsmouth and Middletown that are not served today.
- Funding for public transportation is the biggest threat.

Asset Management, Safety, & Resiliency

- The municipalities in Newport County are forward thinking.
- Better modeling has made for better planning.
- There has been public resistance to sea level rise.
- An asset management weakness is that roadside vegetative clearing and winter sanding programs have been cut by RIDOT.
- As roads are improved there is an opportunity to enhance resiliency, multimodal connectivity, and safety along corridors.
- Jamestown and Sea Level Rise/Storm Surge vulnerabilities: North Road, Beavertail Rd., Conanicus Ave., base of Newport bridge, East Shore Road.



Attendees were encouraged to visit the project website www.PlanRI.com or to contact the project lead if they have any questions or additional comments.



Rhode Island Moving Forward Long-Range Transportation Plan 2040
Municipal Roundtable – Newport County
www.PlanRI.com | PlanRI2040@gmail.com

Agenda & Comment Form

Date/time: Wednesday, September 13th, 2017 9:00 AM to 11:00 AM

Location: Portsmouth Library
2658 East Main Road
Portsmouth, RI 02871

Agenda:

Sign-in Table – County feedback map

9:00 AM – Long-Range Transportation Plan Overview – presentation

9:30 AM - Break-out Sessions: SWOT Analysis

1. Economic Development/Freight/Tourism
2. Bicycle & Pedestrian Mobility
3. Public Transportation
4. Asset Management, Safety, & Resiliency

10:15 PM - Break-out Session Summary & Discussion

10:45 PM – Closing Remarks

Comments:

Please leave comments at the sign-in desk, email, or mail them to:

Rhode Island Division of Planning
One Capitol Hill, 3rd Floor
Providence, RI 02903
Attn: Long-Range Transportation Plan
Email: PlanRI2040@gmail.com



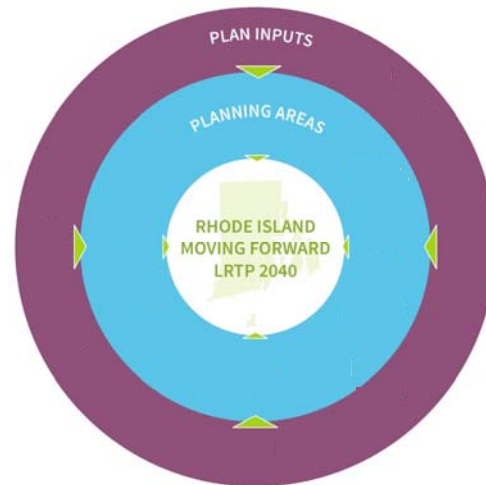
Agenda

1. Welcome & Introductions
2. Project Overview
3. Breakout Stations
 - Economic Development
 - Bicycle and Pedestrian
 - Public Transportation
 - Safety, Resiliency, Asset Management
4. Recap from Breakout Stations
5. Next Steps / Q&A



What is an LRTP?

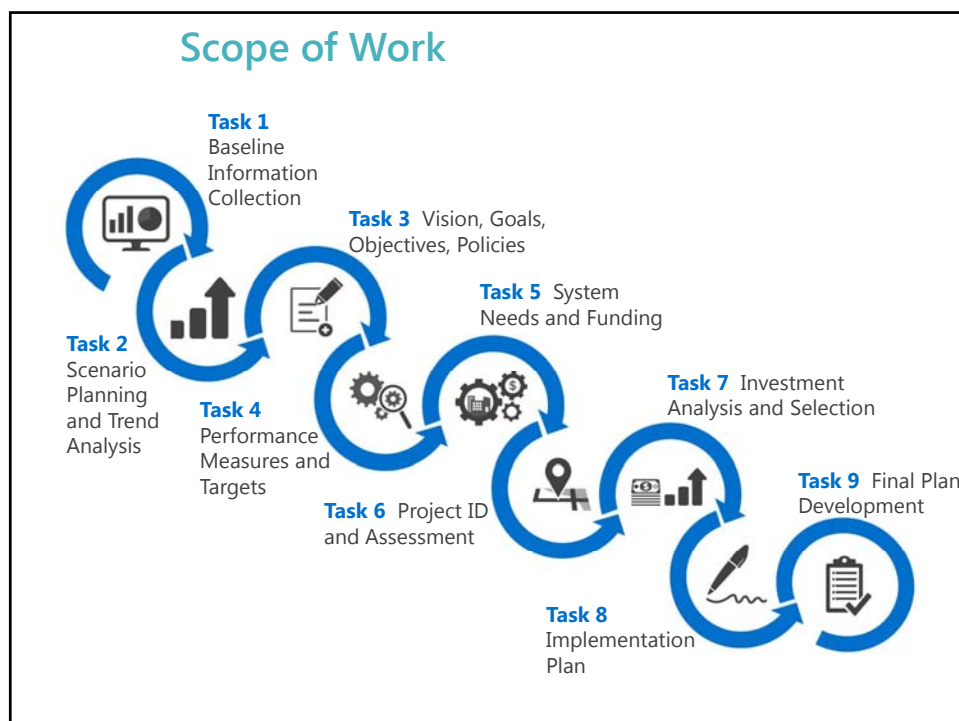
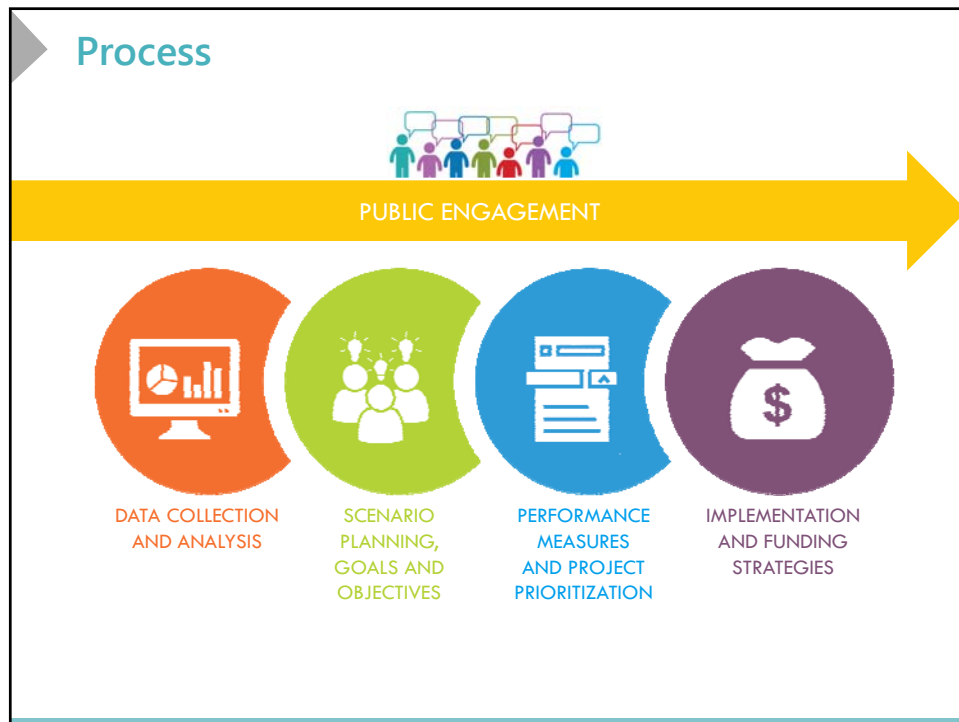
- Transportation vision plan
- Aligned with other long-range planning efforts
- Inputs
 - Policy
 - Data
 - Funding
 - Public Outreach

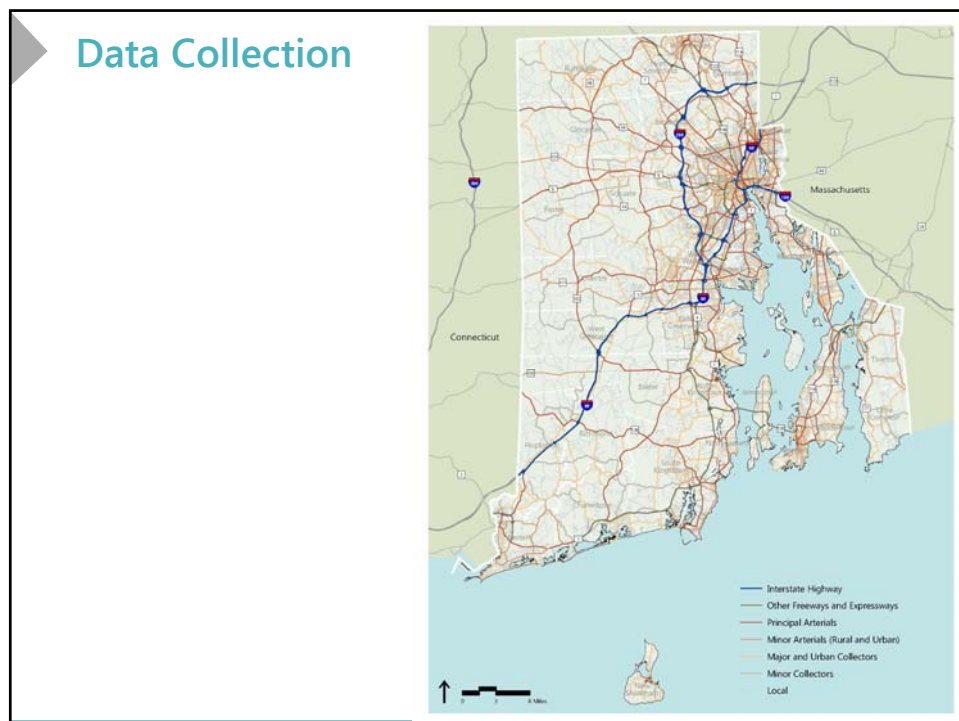


Purpose of an LRTP

sets the direction for major *transportation* investments for the next 20 years

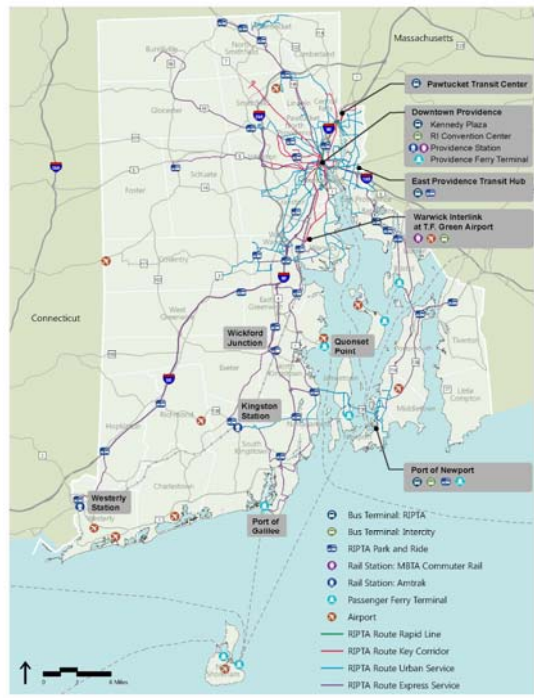






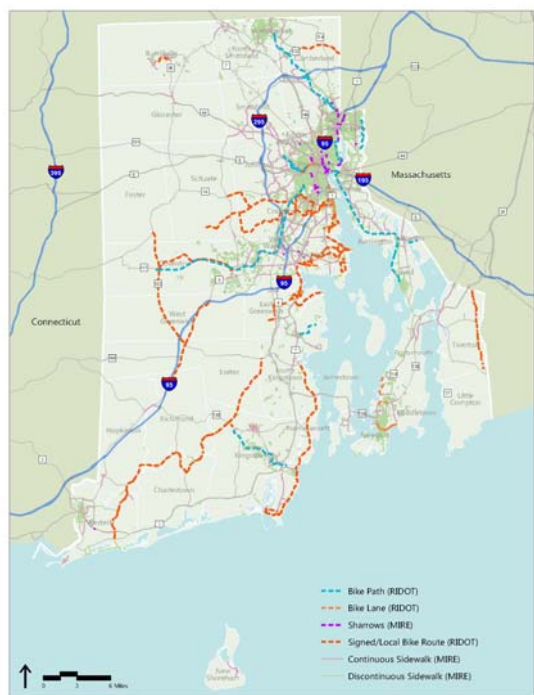
Transit

- Bus Terminals and Routes
- Train Service
- Ferry Terminals
- Airports



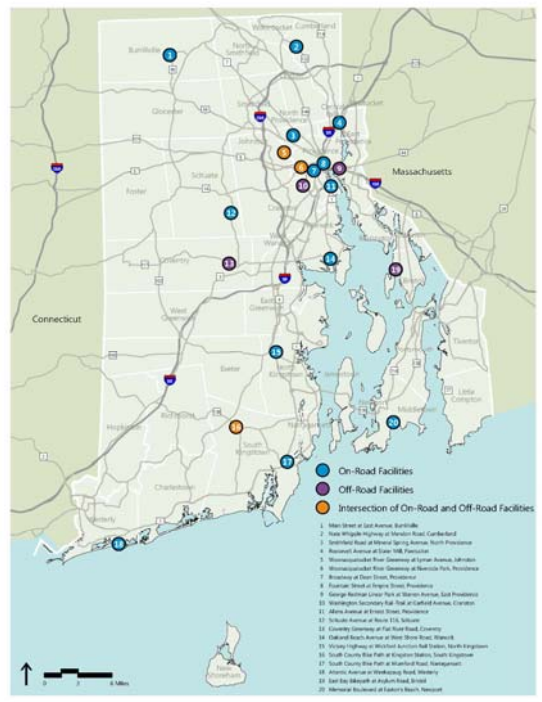
Bicycle & Pedestrian Network

- RIGIS Bicycle Network
- Model Inventory of Roadway Elements (MIRE) Data



Bicycle & Pedestrian Network

Count Locations



Freight

- RI State Rail Plan 2014
- RI Freight and Goods Movement Plan

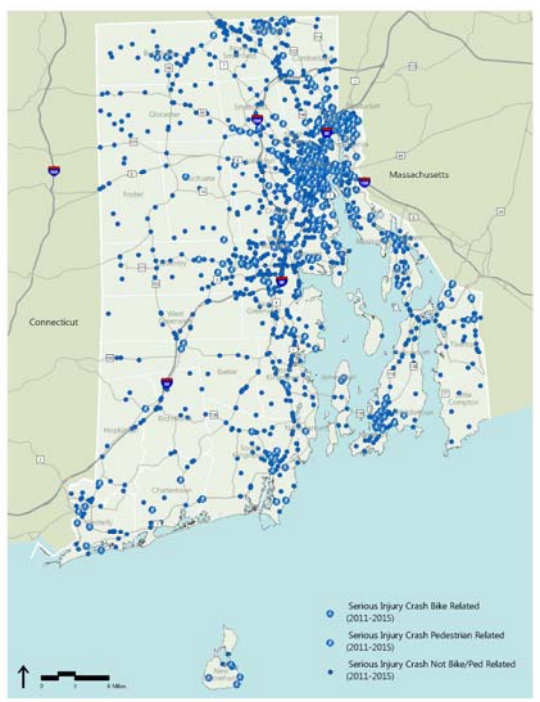


Congested Corridors



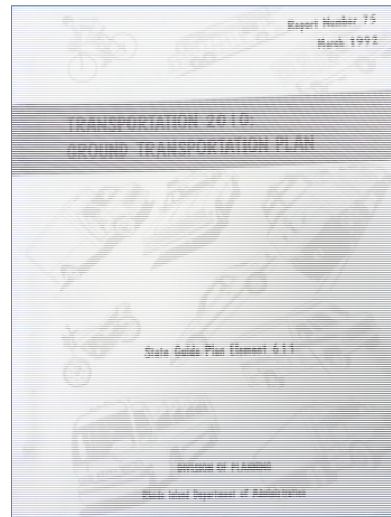
Safety

- Fatal crash locations (FARS)
- Serious Injury crash locations (RIDOT-OHS)
- 2011-2015 data



L RTP 2010 Vision...

- Provide a **balanced** system
- Improve **existing** facilities
- Develop **innovative** solutions
- Support **efficient** movement of goods
- Develop **programs** that contribute to environmental and economic policies
- Provide services for **elderly and handicapped**
- **Coordinate** with other states, local officials, interest groups and the public



Visioning – Needs, Concerns, Opportunities



State of Good Repair



Economic Development



GHG Reductions & Climate Change



Integrated Systems & Future Technology



Public and Stakeholder Engagement

- We want to hear from you!
 - Public Workshops
 - **Municipal Roundtables**
 - Stakeholder Topic Groups
 - Advisory Committees
- Tools and Resources
 - Website
 - Social Media
 - Interactive Bicycle Map
 - Survey



Ongoing Public Outreach



Home About Project News Meetings & Events Documents Get Involved

Rhode Island Moving Forward

TRANSPORTATION FOR THE NEXT 20 YEARS



Welcome to the home of the Rhode Island Long-Range Transportation Plan (LRTP) and Bicycle Mobility Plan (BMP). The Project Team will be using this website, and other tools, to engage and communicate with the public. We look forward to providing updates on project happenings and progress. If you have any comments or questions, please share them with us. We will compile your comments and review them with the Project Team.

THE PLANS

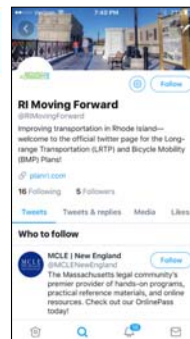
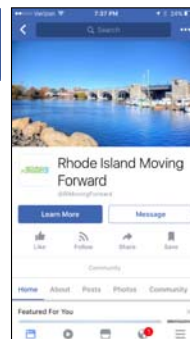
<http://www.planri.com/>

PlanRI2040@gmail.com

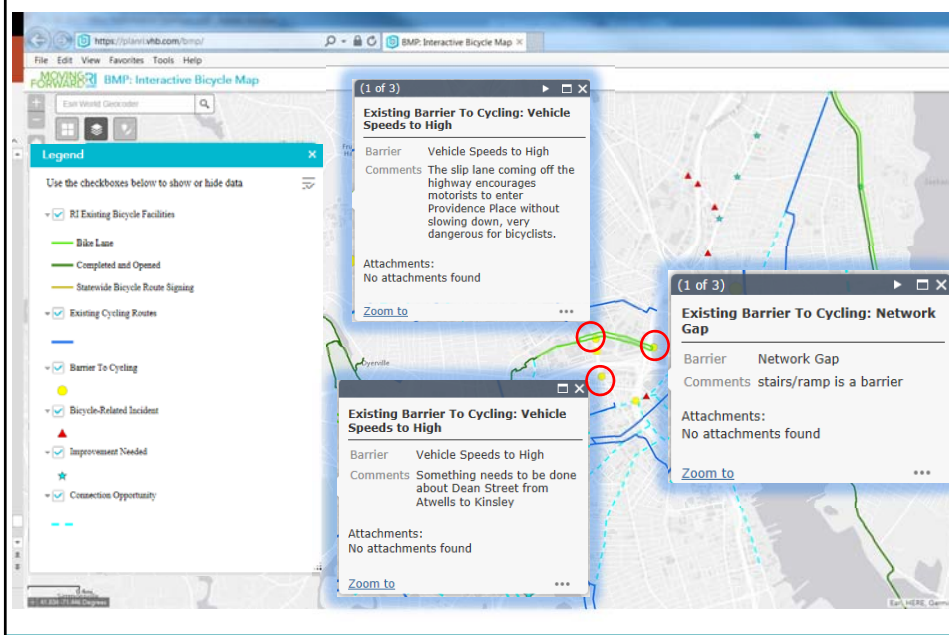
We want your ideas!

We want your input to learn what transportation challenges need to be addressed statewide. Share your observations below!

Send us your comments +
Take our transportation survey +
Contribute to our bicycle map +



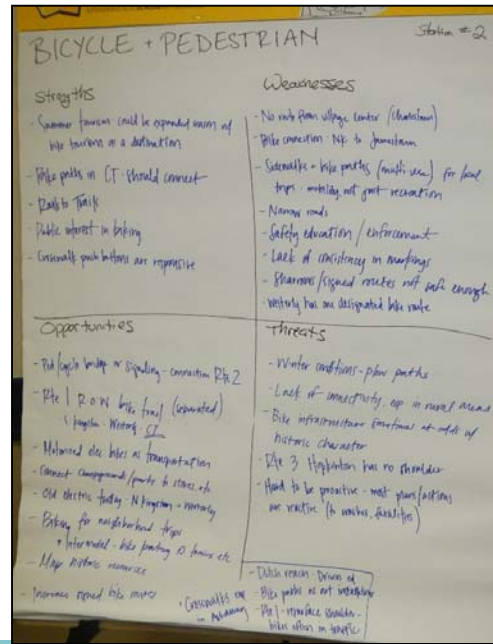
We Are Listening....



We Are Listening....Municipal Roundtable Feedback

Washington County

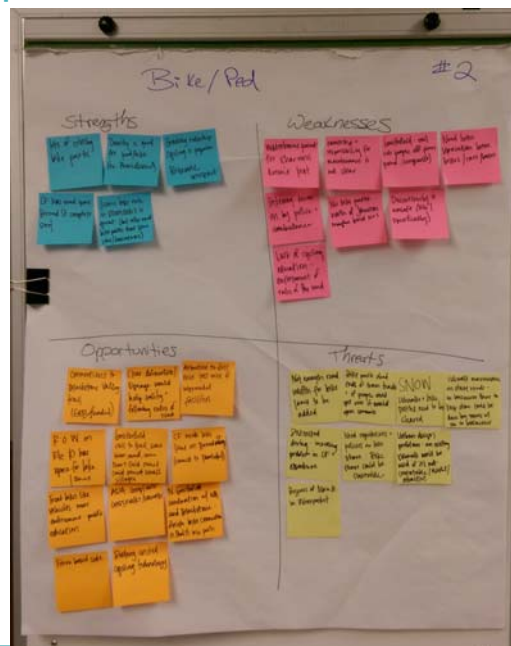
- Summer tourism could be expanded using bike tourism
- There is a public interest in more bike connectivity and enhancing cyclist safety
- Some roads are too narrow to safely allow bikes
- Lack of consistency in lane markings
- Consider bikes as a mode of transportation, not just recreation
- Winter plowing efforts don't always allow for safe bike travel
- Connect bike paths to more destinations like shops, train stations, beaches, and campgrounds



We Are Listening....Municipal Roundtable Feedback

Providence County

- Great existing off-road paths and facilities
- Notable gaps in northern Rhode Island
- Discontinuity at junctions where paths terminate can be a danger
- Great momentum behind cycling (as a movement)



Next Steps

Data Collection

Public and Stakeholder Engagement

- September: Municipal Roundtable discussions (by county)
- Public Workshop #1: Discovery
 - 9/21 – Pawtucket
 - 9/25 – Narragansett
 - 9/28 – Bristol
- Stakeholder Topic Groups Meetings

Scenario Development

