

Rhode Island Moving Forward Long-Range Transportation Plan 2040  
Municipal Roundtable – Providence County  
www.PlanRI.com | PlanRI2040@gmail.com

**Municipal Roundtable Meeting Summary**

**Date/time:** Tuesday, September 12<sup>th</sup>, 2017 10:00 AM to 12:00 PM

**Location:** Glocester Library  
Community Room  
1137 Putnam Pike  
Chepachet, RI 02814

Invited Providence County participants included representatives from RIDOT, North Smithfield, Woonsocket, Cumberland, Central Falls, Burrillville, North Providence, Glocester, Cranston, and Smithfield. Project staff from RI Statewide Planning and VHB helped facilitate the discussions.

After an introduction to the Long-Range Transportation Plan purpose, attendees were divided into three rotating groups and lead through an exercise to provide their input on:

1. Economic Development/Asset Management, Safety Resiliency
2. Bicycle & Pedestrian Mobility
3. Public Transportation

The purpose of this exercise was to identify the strengths, weaknesses, opportunities, and threats associated with each of the above sectors. Participants were encouraged to mark-up maps and write down their ideas for improvement or concerns. Summary points from the exercise include:

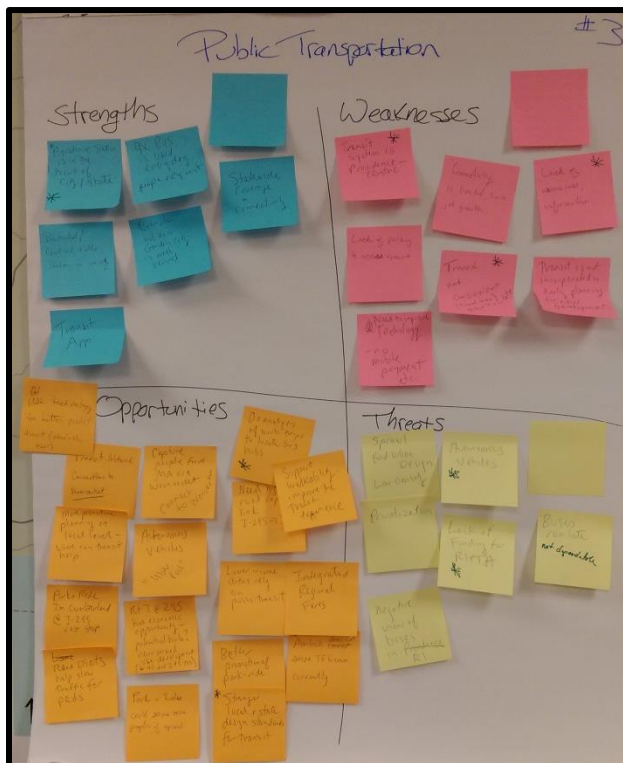
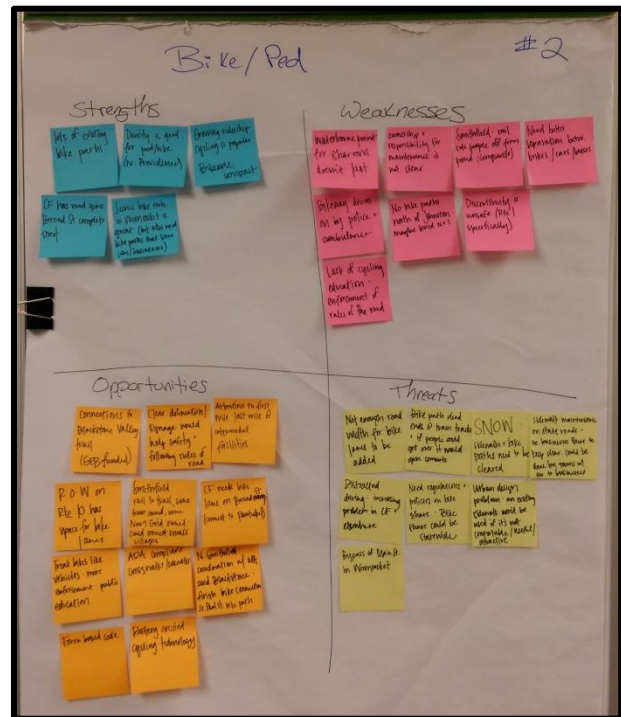
**Economic Development**

- The Providence-Worcester rail line is a good connection for freight.
- The connection of Route 146 to the Mass Pike (I-90) is valuable. However Route 146 at Sayles Hill Road needs improving.
- Port depth in Providence not deep enough for all containers.
- Port of Providence real estate being lost to residential development.
- The new proposal to have an Amazon warehouse in Rhode Island could be an opportunity for new jobs or a threat if those jobs or development draw residents out of the state.
- New tolling on I-95 will bring money into the State but may encourage trucks to take longer routes.
- Driverless rideshare to the beaches in the future.
- Need more access to the coast via public transportation.



## Bicycle & Pedestrian Mobility

- There are many existing bike paths.
- Growing cycling ridership.
- Bike path ownership for maintenance is not clear.
- Need better separations between bikes and motorized vehicles.
- There is a lack of cycling education and enforcement of rules of the road.
- Need more attention given to first and last miles at intermodal facilities.
- Create a statewide bike share.
- Sidewalks and bike paths and lanes should be cleared of snow.
- Need to reduce distracted driving which poses a threat to cyclists.

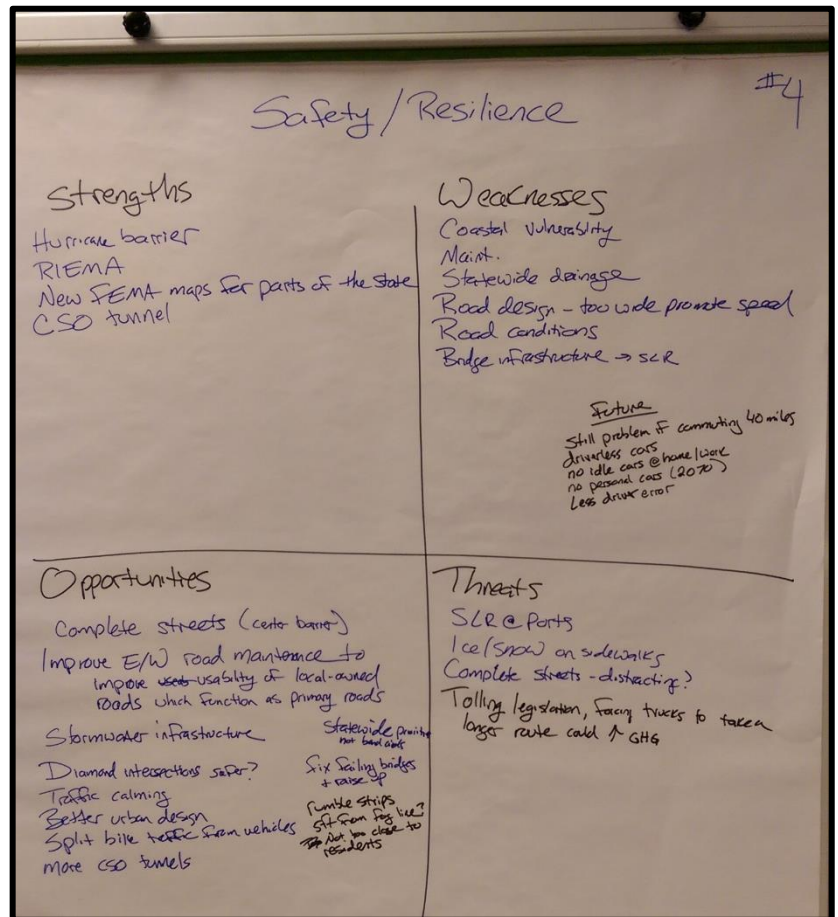


## Public Transportation

- Pawtucket/Central Falls station coming soon.
- The 9 Express bus is used every day to bring people into Providence.
- Cranston hub near Garden City is well served
- Transit is not convenient- it doesn't save time and it doesn't run late into the day and weekend service is limited.
- Opportunity to capture ridership from MA via Woonsocket. Connect to Worcester
- Park and Ride could serve more people if improved and promoted.
- Amtrak should serve T.F. Green airport.
- Poor urban design and sprawl hinders the success of public transportation.
- Negative views of buses.
- Need more funding for RIPTA.

### Asset Management, Safety, & Resiliency

- The hurricane barrier in Providence has reduced losses from flooding.
- Statewide drainage needs to be improved.
- Roads that are built too wide promote speed.
- More opportunities for complete streets to improve safety (reduce speeds). On the other hand, are complete streets distracting for drivers?
- Improve the usability of locally owned roads which function as primary roads
- Sea level rise will affect the ports, bridges, and coastal roads.
- Tolling legislation could force trucks to take a longer route and thereby increasing their greenhouse gas emissions.
- Maybe in the future driverless cars will reduce human error on the roadways.



Attendees were encouraged to visit the project website [www.PlanRI.com](http://www.PlanRI.com) or to contact the project lead if they have any questions or additional comments.



Rhode Island Moving Forward Long-Range Transportation Plan 2040  
Municipal Roundtable – Providence County  
[www.PlanRI.com](http://www.PlanRI.com) | [PlanRI2040@gmail.com](mailto:PlanRI2040@gmail.com)

## Agenda & Comment Form

**Date/time:** Tuesday, September 12<sup>th</sup>, 2017 10:00 AM to 12:00 PM

**Location:** Gloucester Library  
Community Room  
1137 Putnam Pike  
Chepachet, RI 02814

### Agenda:

**Sign-in Table** – County feedback map

**10:00 AM – Long-Range Transportation Plan Overview** – presentation

**10:30 AM - Break-out Sessions:** SWOT Analysis

1. Economic Development/Freight/Tourism
2. Bicycle & Pedestrian Mobility
3. Public Transportation
4. Asset Management, Safety, & Resiliency

**11:15 PM - Break-out Session Summary & Discussion**

**11:45 PM – Closing Remarks**

Comments:

---

---

---

---

---

---

---

---

---

---

Please leave comments at the sign-in desk, email, or mail them to:

Rhode Island Division of Planning  
One Capitol Hill, 3<sup>rd</sup> Floor  
Providence, RI 02903  
Attn: Long-Range Transportation Plan  
Email: [PlanRI2040@gmail.com](mailto:PlanRI2040@gmail.com)





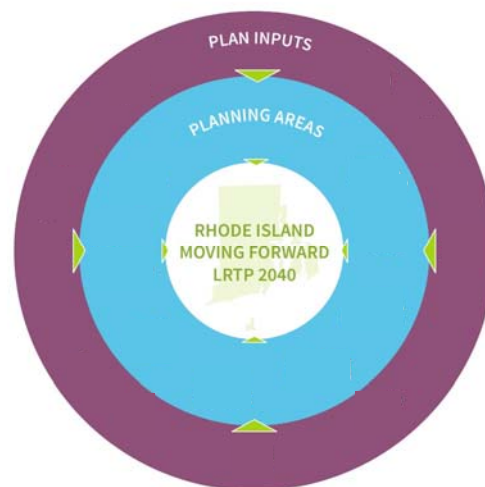
## Agenda

1. Welcome & Introductions
2. Project Overview
3. Breakout Stations
  - Economic Development
  - Bicycle and Pedestrian
  - Public Transportation
  - Safety, Resiliency, Asset Management
4. Recap from Breakout Stations
5. Next Steps / Q&A



## What is an LRTP?

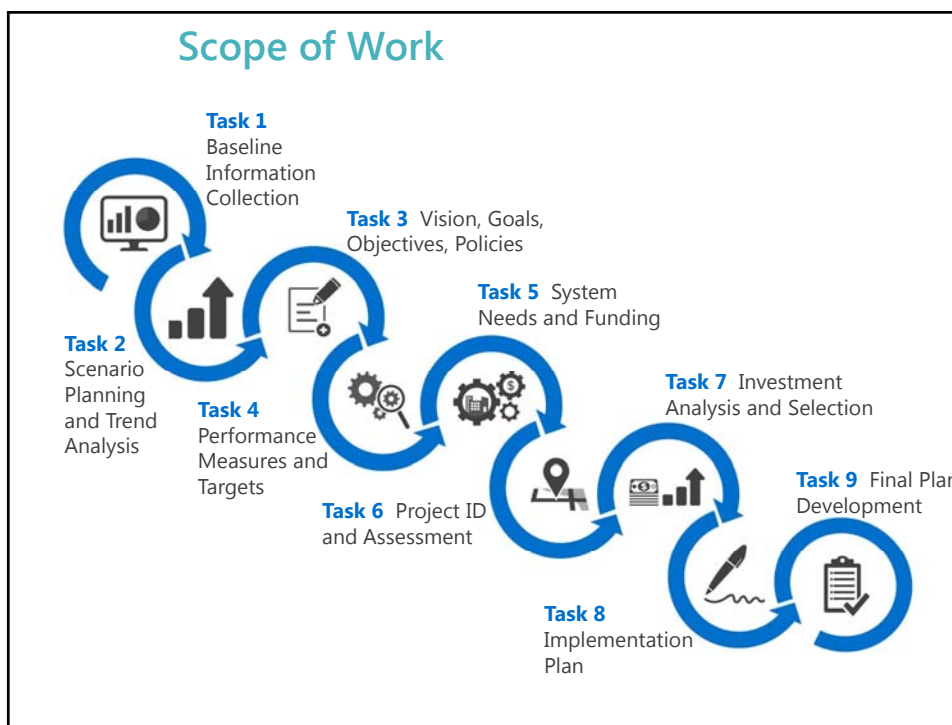
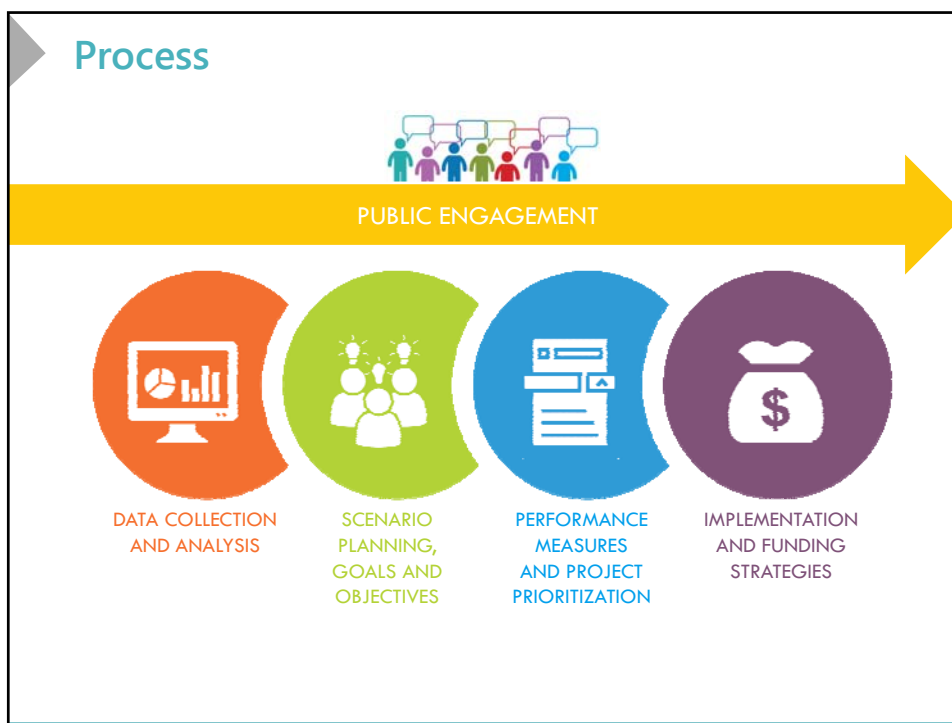
- Transportation vision plan
- Aligned with other long-range planning efforts
- Inputs
  - Policy
  - Data
  - Funding
  - Public Outreach



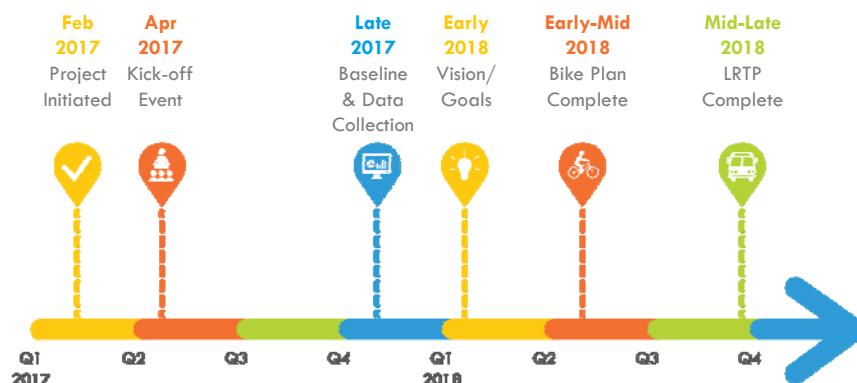
## Purpose of an LRTP

**sets the direction for major *transportation* investments for the next 20 years**





## Schedule



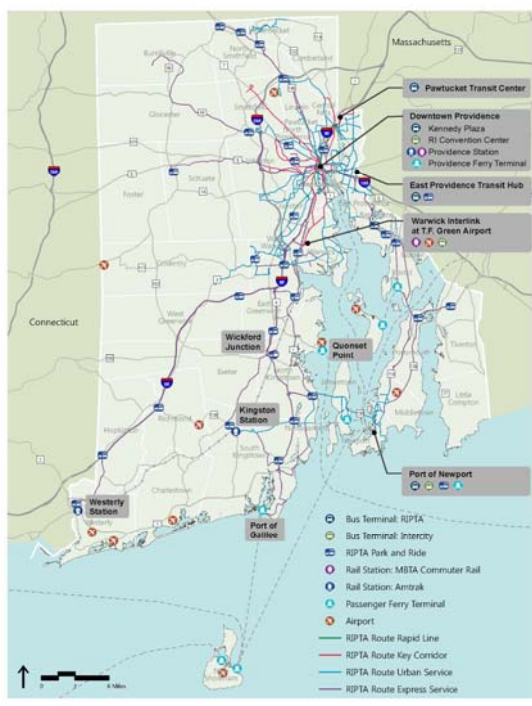
## Data Collection





## Transit

- Bus Terminals and Routes
- Train Service
- Ferry Terminals
- Airports



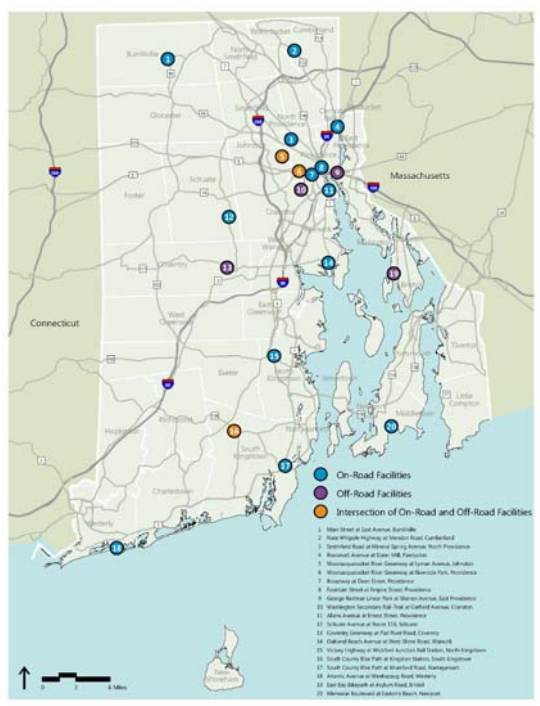
## Bicycle & Pedestrian Network

- RIGIS Bicycle Network
- Model Inventory of Roadway Elements (MIRE) Data



## Bicycle & Pedestrian Network

- Count Locations



## Freight

- RI State Rail Plan 2014
- RI Freight and Goods Movement Plan

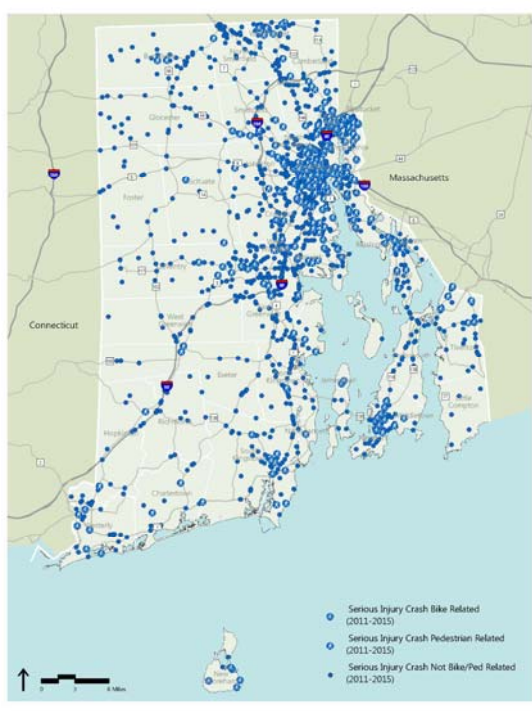


## Congested Corridors



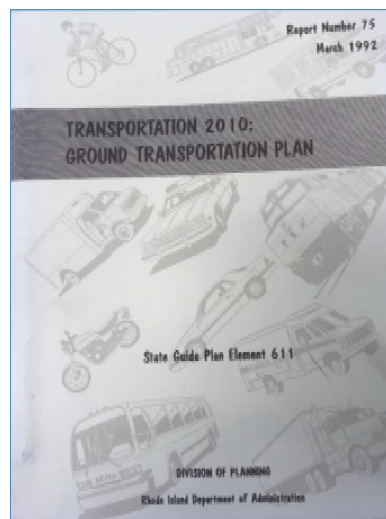
## Safety

- Fatal crash locations (FARS)
- Serious Injury crash locations (RIDOT-OHS)
- 2011-2015 data



## L RTP 2010 Vision...

- Provide a **balanced** system
- Improve **existing** facilities
- Develop **innovative** solutions
- Support **efficient** movement of goods
- Develop **programs** that contribute to environmental and economic policies
- Provide services for **elderly and handicapped**
- **Coordinate** with other states, local officials, interest groups and the public



## Visioning – Needs, Concerns, Opportunities



State of Good Repair



Economic Development



GHG Reductions & Climate Change



Integrated Systems & Future Technology



## What are the strengths and weaknesses of our transportation network?

What impact can transportation have on other sectors?

# What does multimodal transportation look like in 20 years?

What are your goals for transportation in Rhode Island?

## What role does technology play in transportation?

## Public and Stakeholder Engagement

- We want to hear from you!
  - Public Workshops
  - **Municipal Roundtables**
  - Stakeholder Topic Groups
  - Advisory Committees
- Tools and Resources
  - Website
  - Social Media
  - Interactive Bicycle Map
  - Survey





## Ongoing Public Outreach



Home About Project News Meetings & Events Documents Get Involved

### Rhode Island Moving Forward TRANSPORTATION FOR THE NEXT 20 YEARS



Welcome to the home of the Rhode Island Long-Range Transportation Plan (LRTP) and Bicycle Mobility Plan (BMP). The Project Team will be using this website, and other tools, to engage and communicate with the public. We look forward to providing updates on project happenings and progress. If you have any comments or questions, please share them with us. We will compile your comments and review them with the Project Team.

#### THE PLANS

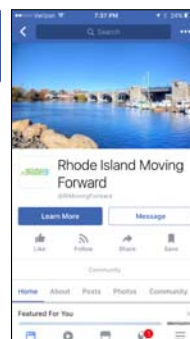
<http://www.planri.com/>

[PlanRI2040@gmail.com](mailto:PlanRI2040@gmail.com)

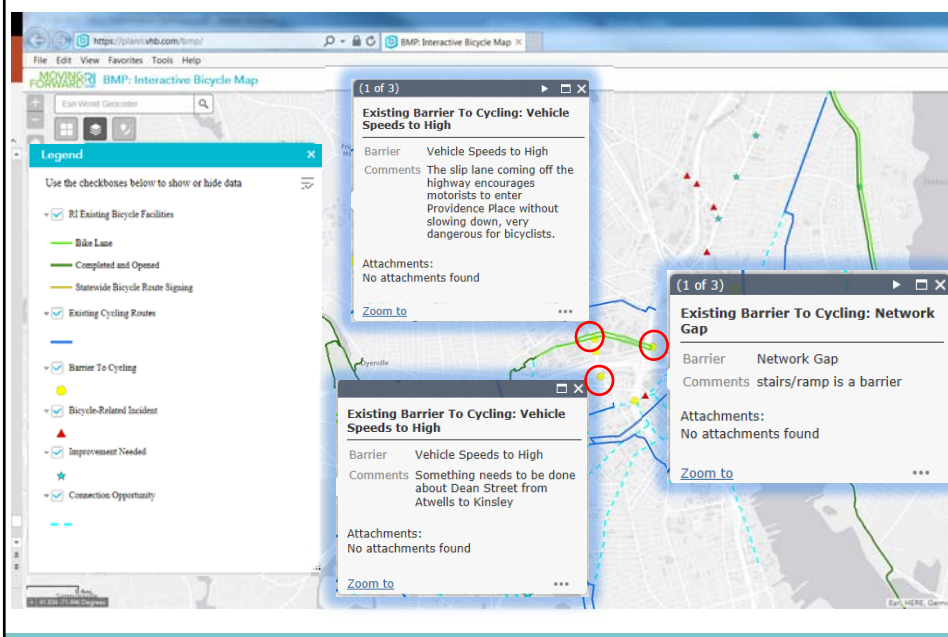
#### We want your ideas!

We want your input to learn what transportation challenges need to be addressed statewide. Share your observations here!

Send us your comments »  
Take our transportation survey »  
Contribute to our bicycle map »



## We Are Listening....



## Next Steps

### Data Collection

### Public and Stakeholder Engagement

- September: Municipal Roundtable discussions (by county)
- Public Workshop #1: Discovery
  - **9/21 – Pawtucket**
  - **9/25 – Narragansett**
  - **9/28 – Bristol**
- Stakeholder Topic Groups Meetings

### Scenario Development

