

Rhode Island Moving Forward Long-Range Transportation Plan 2040
Municipal Roundtable – Washington County
www.PlanRI.com | PlanRI2040@gmail.com

Municipal Roundtable Meeting Summary

Date/time: Tuesday, September 5th, 2017 11:00 AM to 1:00 PM

Location: URI Memorial Gallery
50 Lower College Road
Kingston, RI 02881

Invited Washington County participants included representatives from RIDOT, the Towns of Hopkinton, Narragansett, Charlestown, North Kingstown, South Kingstown, and Westerly; and the Connecticut Trust. Also in attendance were Senator Morgan and Representative Roberts. Project staff from RI Statewide Planning and VHB helped facilitate the discussions.

After an introduction to the Long-Range Transportation Plan purpose, attendees were divided into four rotating groups and lead through an exercise to provide their input on:

1. Economic Development/Freight/Tourism
2. Bicycle & Pedestrian Mobility
3. Public Transportation
4. Asset Management, Safety, & Resiliency

The purpose of this exercise was to identify the strengths, weaknesses, opportunities, and threats associated with each of the above sectors. Participants were encouraged to mark-up maps and write down their ideas for improvement or concerns. Summary points from the exercise include:

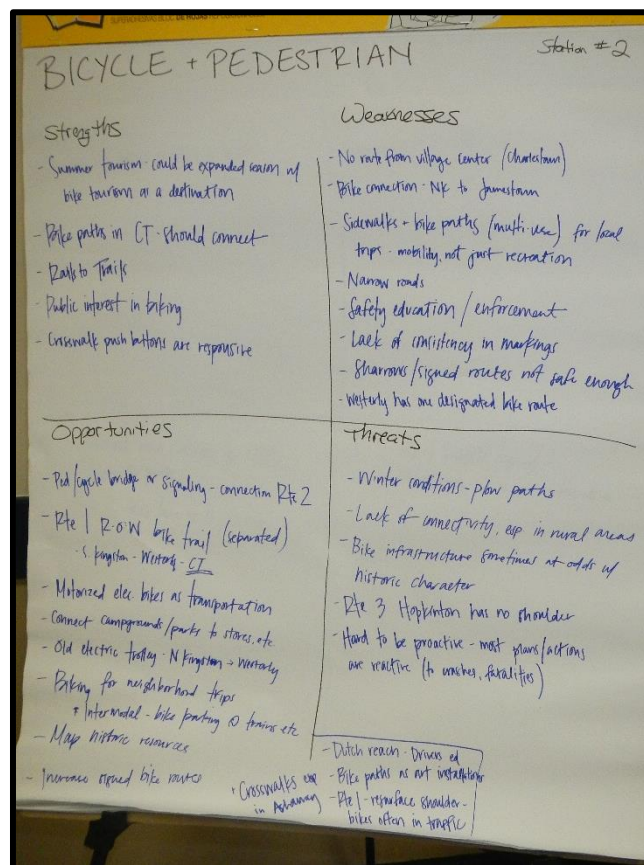
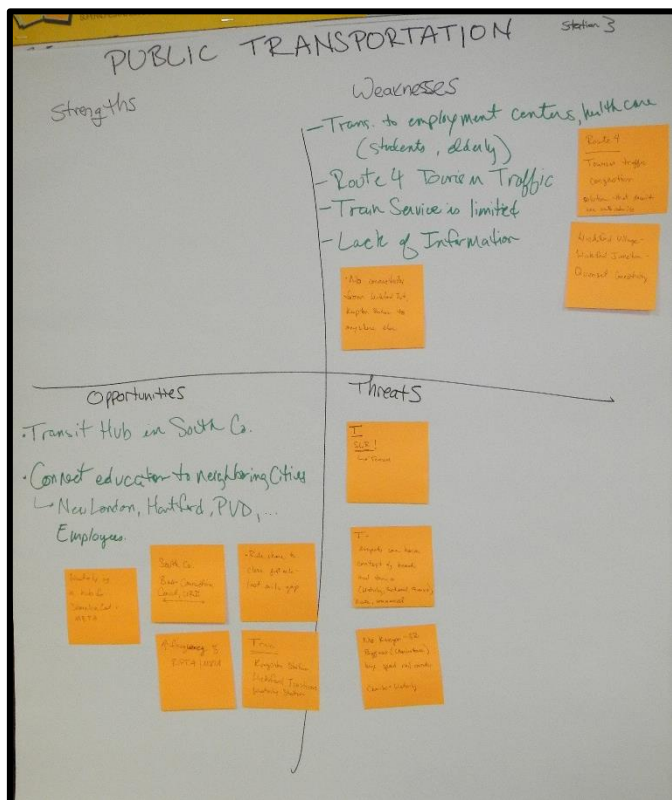
Economic Development/Freight/Tourism

- South County tourism is strong
- South County lacks east/west transit mobility
- RI mentality encourages short travel distances
- New tolls may increase demand for shipping rather than trucking
- Gas tax and new tolling will be invested to maintain infrastructure in state of good repair
- Complete streets proposed for Route 108 and Route 1A, in South Kingstown,, Route 1 in North Kingstown from 403 to West Main
- Adjust the traffic signal timing during the summer months
- Improve connectivity from hubs such as URI, Westerly Station, Wickford Junction, and Kington Station
- Popular coastal tourism sites and access to those sites are susceptible to sea level rise



Bicycle & Pedestrian Mobility

- Summer tourism could be expanded by taking advantage of bike tourism as a destination.
- There is a public interest in more bike connectivity and enhancing cyclist safety
- Some roads are too narrow to safely allow for bikes
- Lack of consistency in lane markings
- Consider bikes as a mode of transportation, not just recreation
- Winter plowing efforts don't always allow for safe bike travel
- Connect bike paths to more destinations like shops, train stations, beaches, and campgrounds



Public Transportation

- Train service is limited
- Increase frequency of RIPTA/MBTA
- Improve connection between Wickford Village, Wickford Junction, and Quonset.
- Have more transit hubs in South County (enhance existing hubs: Kingston Station, Wickford Junction, Westerly Station)
- Ride share as an opportunity to close first mile/last mile gap
- Connect education to neighboring cities- New London, Hartford, Providence

Attendees were encouraged to visit the project website www.PlanRI.com or to contact the project lead if they have any questions or additional comments.



Rhode Island Moving Forward Long-Range Transportation Plan 2040
Municipal Roundtable – Washington County
www.PlanRI.com | PlanRI2040@gmail.com

Agenda & Comment Form

Date/time: Tuesday, September 5th, 2017 11:00 AM to 1:00 PM

Location: URI Memorial Gallery
50 Lower College Road
Kingston, RI 02881

Agenda:

Sign-in Table – County feedback map

11:00 AM – Long-Range Transportation Plan Overview – presentation

11:30 AM - Break-out Sessions: SWOT Analysis

1. Economic Development/Freight/Tourism
2. Bicycle & Pedestrian Mobility
3. Public Transportation
4. Asset Management, Safety, & Resiliency

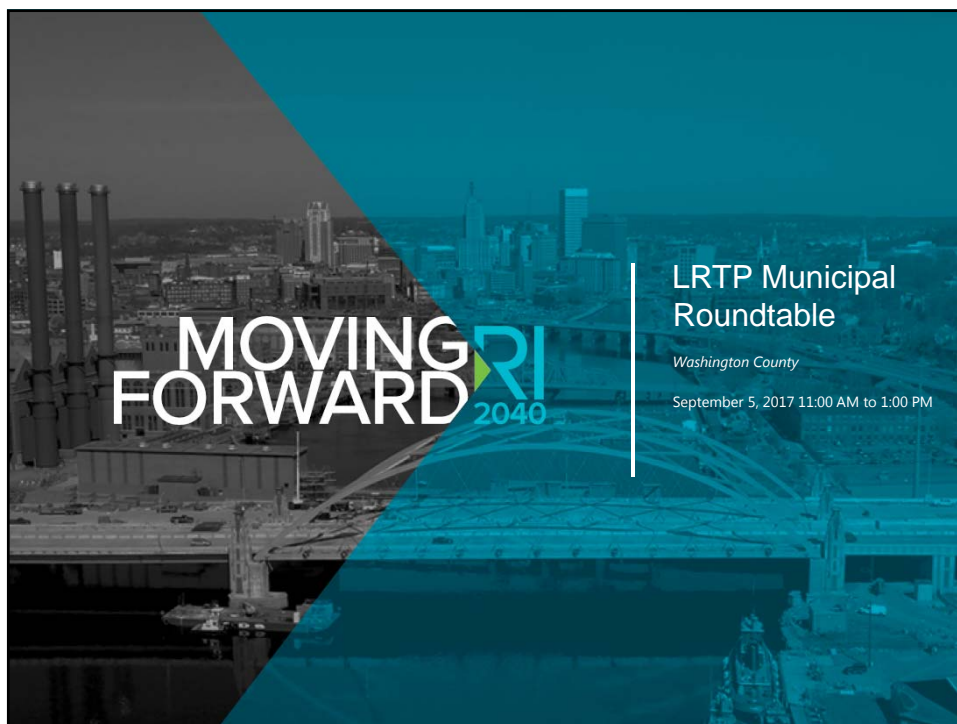
12:15 PM - Break-out Session Summary & Discussion

12:45 PM – Closing Remarks

Comments:

Please leave comments at the sign-in desk, email, or mail them to:

Rhode Island Division of Planning
One Capitol Hill, 3rd Floor
Providence, RI 02903
Attn: Long-Range Transportation Plan
Email: PlanRI2040@gmail.com



Agenda

1. Welcome & Introductions
2. Project Overview
3. Breakout Stations
 - Economic Development
 - Bicycle and Pedestrian
 - Public Transportation
 - Safety, Resiliency, Asset Management
4. Recap from Breakout Stations
5. Next Steps / Q&A



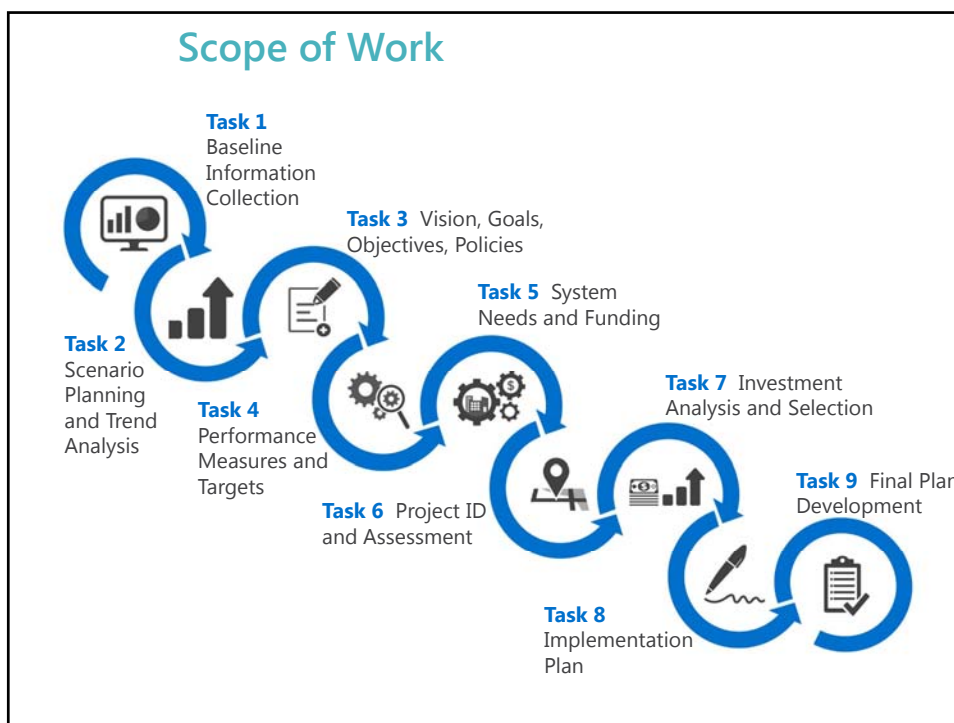
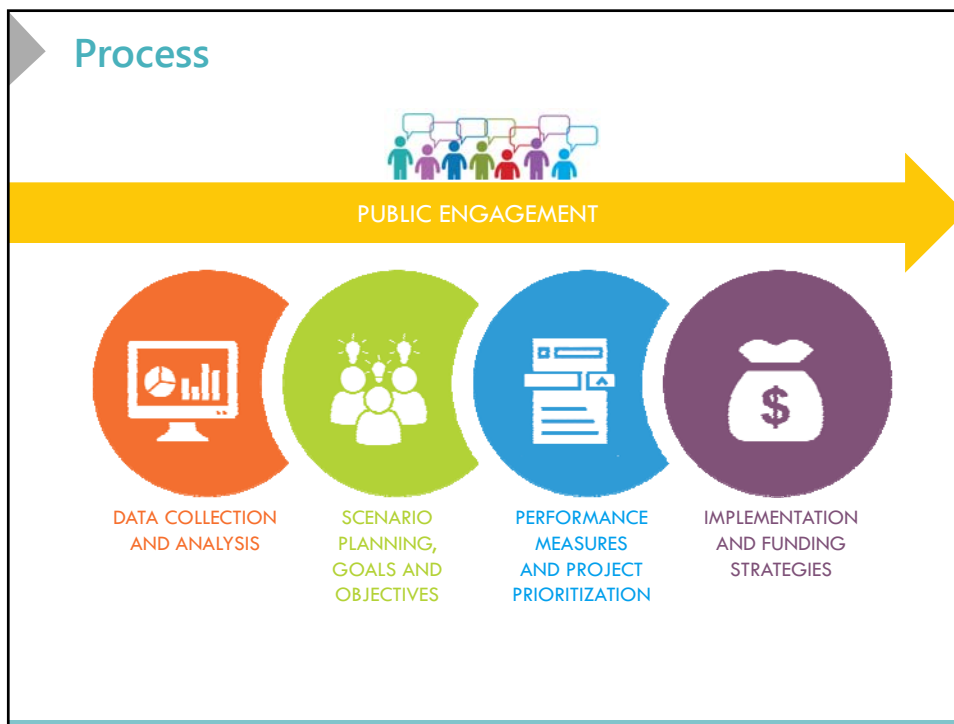
What is an LRTP?

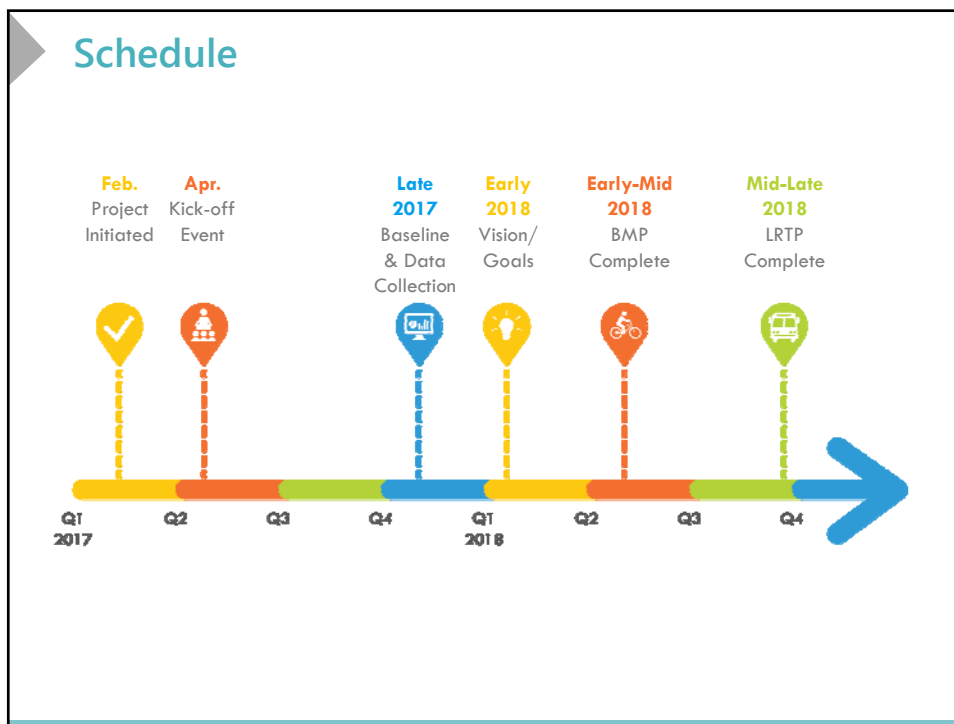
- Inputs
 - Federal and State Requirements
 - Data
 - Historic and Projected Funding
 - Public Input
- Aligned with other long-range planning efforts
- Statewide Bicycle Mobility Plan (BMP) occurring on parallel track



Purpose of an LRTP

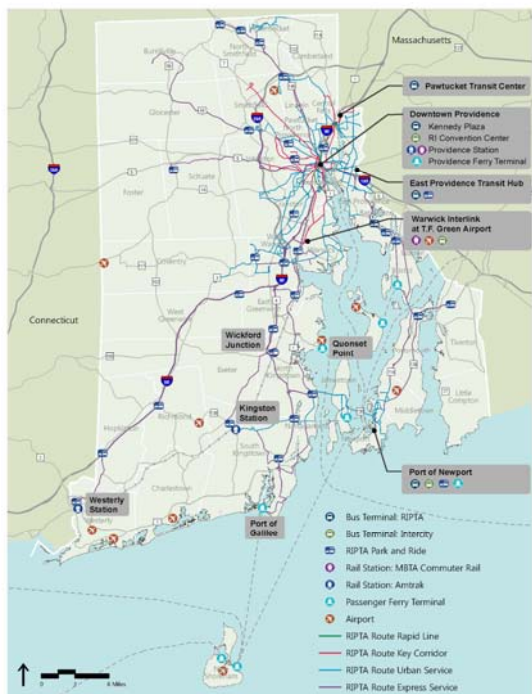






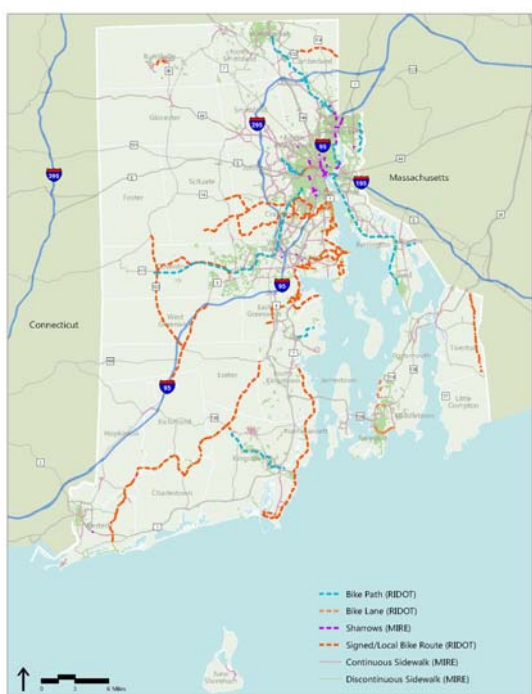
Transit

- Bus Terminals and Routes
- Train Service
- Ferry Terminals
- Airports



Bicycle & Pedestrian Network

- RIGIS Bicycle Network
- Model Inventory of Roadway Elements (MIRE) Data



Freight

- RI State Rail Plan 2014
- RI Freight and Goods Movement Plan

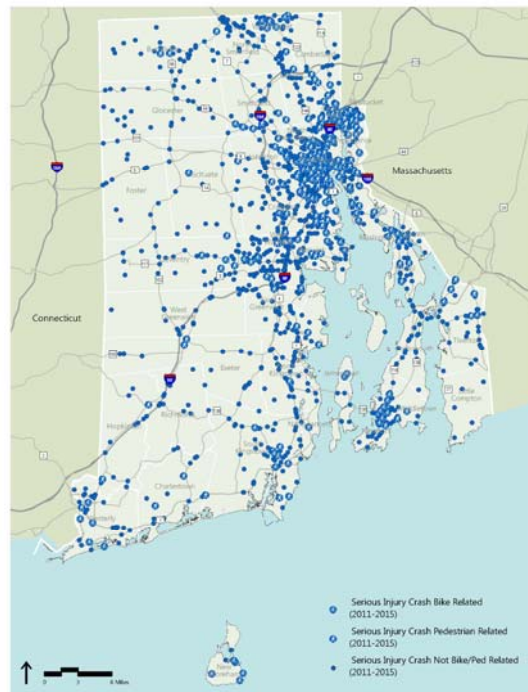


Congested Corridors



Safety

- Fatal crash locations (FARS)
- Serious Injury crash locations (RIDOT-OHS)
- 2011-2015 data



Visioning – Needs, Concerns, Opportunities



State of Good Repair



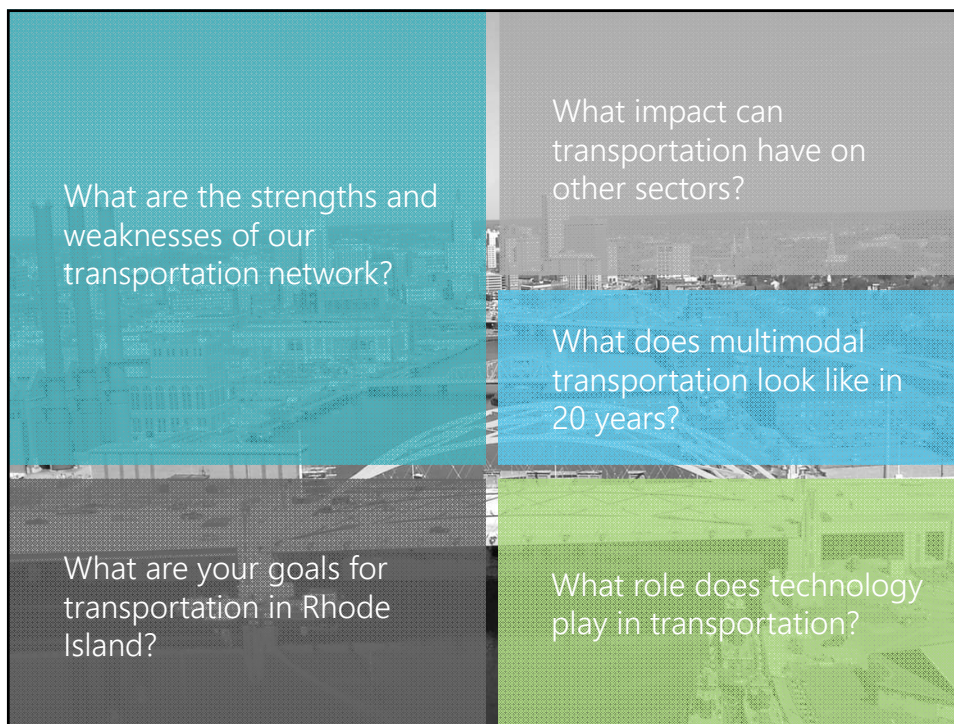
Economic Development



GHG Reductions & Climate Change



Integrated Systems & Future Technology



Public and Stakeholder Engagement

- We want to hear from you!
 - Public Workshops
 - Municipal Roundtables
 - Stakeholder Topic Groups
 - Advisory Committees
- Tools and Resources
 - Website
 - Social Media
 - Interactive Bicycle Map
 - Survey (electronic and paper)

A group of people, including a man in a grey and white striped shirt and a woman in a blue jacket, are gathered around a table. They are looking at a large map or document spread out on the table. There are some red markers or pins on the map.

A group of people are gathered around a large map or display on a wall. One person is pointing at the map. The map appears to be a detailed map of a city or region.

Ongoing Public Outreach



Home About Project News Meetings & Events Documents Get Involved

Rhode Island Moving Forward

TRANSPORTATION FOR THE NEXT 20 YEARS



Welcome to the home of the Rhode Island Long-Range Transportation Plan (LRTP) and Bicycle Mobility Plan (BMP). The Project Team will be using this website, and other tools, to engage and communicate with the public. We look forward to providing updates on project happenings and progress. If you have any comments or questions, please [share them with us](#). We will compile your comments and review them with the Project Team.

THE PLANS

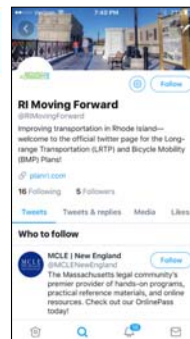
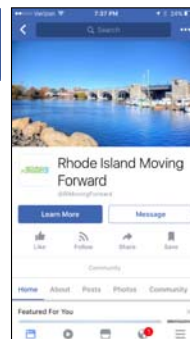
<http://www.planri.com/>

PlanRI2040@gmail.com

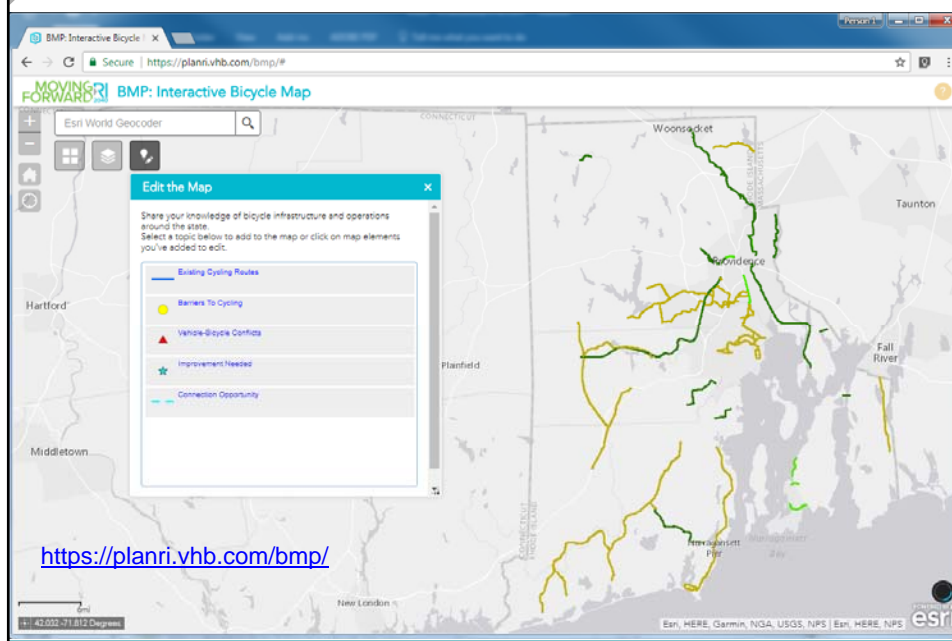
We want your ideas!

We want your input to learn what transportation challenges need to be addressed statewide. Share your observations below!

[Send us your comments >](#)
[Take our transportation survey >](#)
[Contribute to our bicycle map >](#)



Interactive Bicycle Map



<https://planri.vhb.com/bmp/>

Next Steps

- September: Municipal Roundtable discussions (by county)
- Public Workshop #1: Discovery
 - End of September
- Stakeholder Topic Groups Meetings
- Scenario Development

